

# **Management Plan for the “Trelleborg Fortresses”**

## **Component Part**

### **1 PREAMBLE**

This management plan has been prepared for the “Trelleborg Fortresses”.

The three Viking Age ring fortresses – Aggersborg, Fyrkat, and Trelleborg – were included on the Tentative List for UNESCO’s World Heritage Sites on 7 February 2011 and were nominated as candidates to be included on the World Heritage List as part of the serial nomination “Viking Age Sites in Northern Europe”. On this basis, the component part, “The Trelleborg Fortresses”, must comply with the World Heritage Convention.

The management plan is an overall monitoring tool, which is to be applied by the authorities to ensure that the value of the World Heritage Site is preserved and that the balance between protection and use of the World Heritage Site is reasonable.

As the national responsible authority, the Danish Agency for Culture is to ensure that the requirements of the Convention and applicable operational guidelines are met. The sites are responsible for ensuring that their management plans are followed and kept up-to-date.

In co-operation with the Danish National Museum (owner) and The Danish Nature Agency (owner and administrator), the Historical Museum of Northern Jutland (administrator) and Trelleborg Viking Fortresses (administrator) have the formal responsibility to work out the management plan locally and to administer The Trelleborg Fortresses. At a local level, the collaboration is implemented with the Municipalities of Mariagerfjord, Slagelse, and Vesthimmerland, which, as the local authorities, have competence at the environmental level and are responsible for working out municipal and district plans. At the national level, the Danish Agency for Culture is involved as the national responsible authority for Danish World Heritage Sites in relation to UNESCO.

### **2 Aim of the management plan**

The Trelleborg fortresses were included on the Tentative List for UNESCO's World Heritage Sites on 7 February 2011, thanks to the exceptional evidence they provide for monumental and defensive constructions in the Viking Age and their monumental manifestation of central power during the late Viking Age. They are to be administered through a management plan. This is the general management tool employed by administrative authorities to ensure that a World Heritage Site is preserved and that a reasonable balance exists between its protection and use. In order to protect the component part, the coordinating group arranges an annual working meeting to which the following participants are invited: owners (the Danish National Museum, the Danish Nature Agency, and the Danish Agency for Culture), users (the Historical Museum of Northern Jutland, Vesthimmerlands Museum, and the National Museum of Denmark) as well as the municipalities (Mariagerfjord, Slagelse, and Vesthimmerland). The agenda for the meeting includes the following points:

- Threats to the property
- Care for the property
- Interpretation and presentation of the property
- Research on the property.

The overall aim of the management plan is to protect the aspects of outstanding universal value that represent the reason for inclusion on the World Heritage List. In addition, the management plan is also to ensure that:

- all users have an understanding of the World Heritage Site and its unique value and, at the same time, that the local population's pride of, interest in, and respect for the site are promoted;
- all users have the opportunity for enriching and informative experiences;
- tourism is developed on a sustainable basis;
- a sensible and sustainable balance is created between the various applications and interests associated with the area;
- knowledge of the World Heritage component part is disseminated;
- research is carried out into the property.

The management plan for “The Trelleborg Fortresses” will be taken up for an evaluation at a regular working meeting. Revision of the management plan will be carried out at the instigation of the working meeting and will ultimately be approved by the owners, municipalities, and museums.

A more detailed description of the World Heritage component part is not provided in the management plan. Reference is made to the nominating material.

The management plan deals with actions that have already taken place as well as actions to be implemented within the next few years. In the long run, considerations with respect to long-term visions will be necessary.

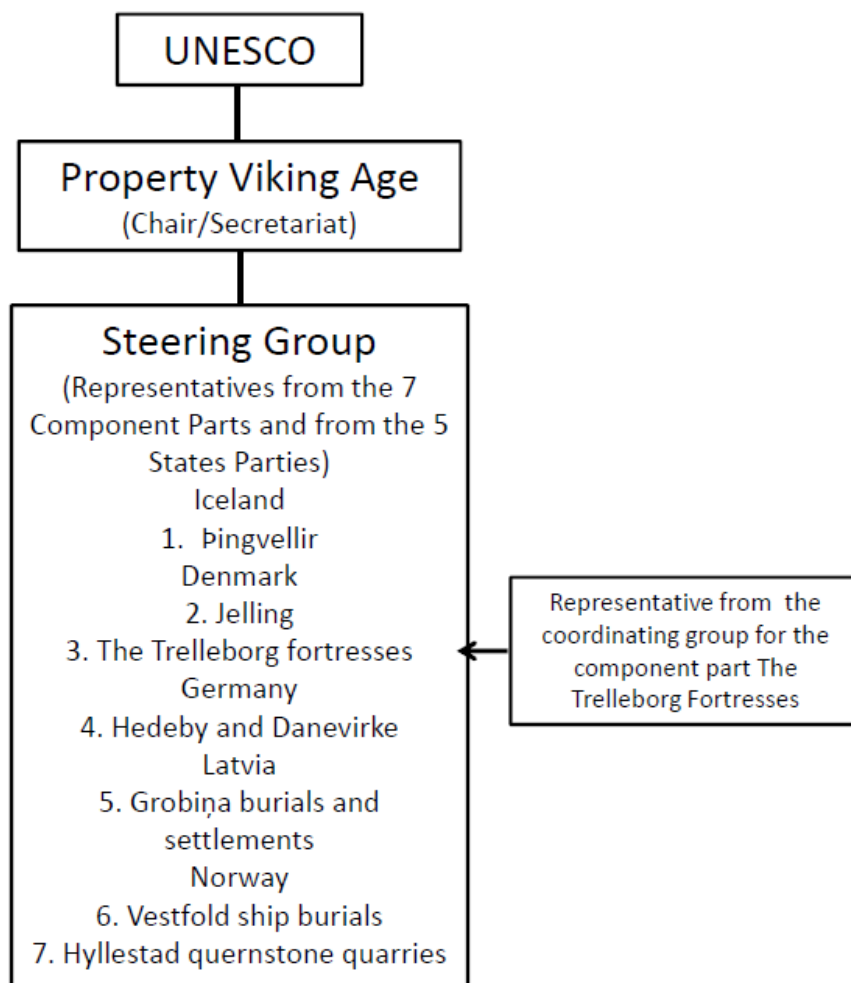


*Figure: Fyrkat, Hobro, and Mariagerfjord. Photo: Esben Schlosser Mauritsen.*

### 3 Responsibility for the World Heritage Site

The management of the Trelleborg Fortresses component part is a co-operation among several parties. Contact with UNESCO is maintained through the chairperson of “the management group for Viking Age Sites in Northern Europe”.

The Trelleborg Fortresses are represented by one representative on the steering group. The representative for "The Trelleborg Fortresses" is elected by a "Trelleborg Group", which is the coordinating body for the component part. The members of this body are appointed by the administrators of each of the three fortresses, i.e., municipalities, museums, owners, etc. The site managers of the fortresses are automatically members of the coordination body.



### **Aggersborg**

The Danish Agency for Culture has national supervisory responsibility via the Historical Museum of Northern Jutland. The Danish Nature Agency is in charge of daily supervision.

The artefacts from The Aggersborg Fortress at the Danish National Museum are under the care of a conservator.

Overall monitoring and administration of the listed monument is carried out by the Danish Nature Agency and the Historical Museum of Northern Jutland.

Responsibility for the listed monument: The Danish Nature Agency.

### **Fyrkat**

The Danish Agency for Culture has national supervisory via the local museum: the Historical Museum of Northern Jutland, which is also in charge of daily supervision.

The artefacts from The Fyrkat Fortress at Hobro Museum are under the care of a conservator at the Historical Museum of Northern Jutland. The artefacts kept at the Danish National Museum are in the care of a conservator.

Overall monitoring and administration of the listed monument is carried out by the Danish National Museum and the Historical Museum of Northern Jutland.

Responsibility for the listed monument: The Danish National Museum, which has delegated the practical responsibility to the Historical Museum of Northern Jutland.

### Trelleborg

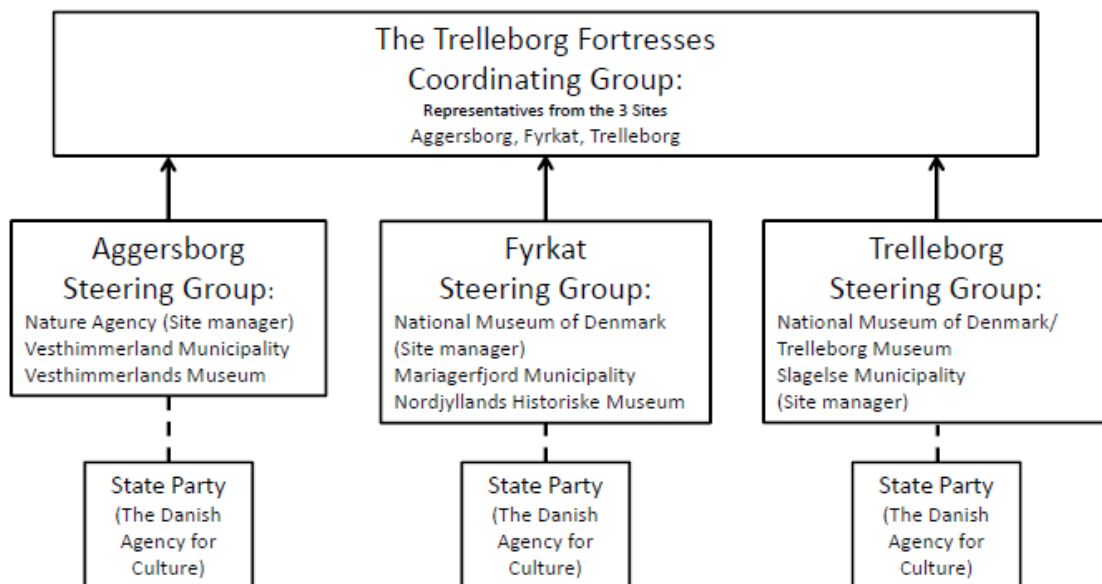
The Danish Agency for Culture has the national supervisory responsibility via the local museum (Roskilde Museum). Trelleborg Viking Fortress/The National Museum of Denmark is in charge of the daily supervision and monitoring of the ancient monument.

The daily monitoring of the ancient monument and the original artefacts in the exhibition is the manager/ keeper of Trelleborg Viking Fortress.

The overall monitoring and administration of the listed monument and the National Museum of Denmark's artefacts are the responsibility of the manager/ keeper of Trelleborg and the representative of the National Museum.

Responsibility for the listed monument and the museum: The National Museum of Denmark/Trelleborg Viking Fortress.

The overall organisation of the State Party, municipalities, and museums involved:



## 4 National legislation

The “The Trelleborg Fortresses” component part is included in the provisions of the Danish Museum Act on listed monuments, and a series of provisions in the Danish Nature Protection Act are applicable to the site and buffer zone.

In general, the provisions of the Danish Nature Protection Act aim to keep the rampart, ditch, and fortress intact with the least possible erosion and wear arising from care and use. Furthermore, there is a desire to conserve and make visible the location of the fortresses within the landscape. As a consequence, this preserves the evidence of the fortresses as Viking Age monumental and defensive constructions as well as their strategic positions in the landscape.

- The actual Trelleborg-type fortresses are protected by the Danish Museum Act (consolidated act no. 1505 of 14 December 2006) (see annex 5b\_a1).

Other applicable law:

### **Aggersborg**

The property is mentioned in the municipal plan that, in turn, is regulated by the Danish Planning Act – see annex 5b\_a2.

The property is designated as an “archaeological site of irreplaceable cultural importance” (100701-36), which is an area of land that contains known archaeological remains of national (international) scientific, cultural or historical importance. This designation does not have protective effect but is of an informative character.

Aggersborg lies within an International Nature Reserve according to the Danish Nature Protection Act and the Danish Environmental Objectives Act. Aggersborg is the subject of protective legislation pursuant to chapter 6 of the Danish Nature Protection Act. The conservation provisions were approved by the Nature Protection Board of Appeal on 4 September 1990. The southernmost part of Aggersborg lies within a coastal protection zone according to the Danish Nature Protection Act § 15 (see annex 5b\_a3).

The main building of the Aggersborggård manor is the subject of a registered listing pursuant to the Danish Building Preservation Act (see annex 5b\_a4).

In the 2009 Municipal Plan for Vesthimmerland Municipality, Aggersborg lies within a natural amenity area pursuant to the Danish Planning Act § 11a (13); a coastal protection zone pursuant to the Danish Planning Act § 11a (18); a valuable historic environment in the 2009 Municipal Plan for Vesthimmerland Municipality pursuant to the Danish Planning Act § 11a (14); an afforestation undesirable area pursuant to the Danish Planning Act § 11a (11); and an ecological corridor pursuant to the Danish Planning Act § 11a (13).

In the 2009 Municipal Plan for Vesthimmerland Municipality, Aggersborg lies in conjunction with the following designations, which have an influence on the use and protection of the areas around the property: Wind-turbine area pursuant to the Danish Planning Act § 11a (5); agricultural area pursuant to the Danish Planning Act § 11a (10); geologically-valuable area pursuant to the Danish Planning Act § 11a (16); and area of special landscape value pursuant to the Danish Planning Act § 11a (15).

The designation is included within the provisions of chapter 6 of the Danish Nature Protection Act. The latter was approved by the Nature Protection Board of Appeal on 4 September 1990. It has the aim of conserving and protecting the area's cultural-historical and archaeological assets and, in particular, the remains of the Viking Age fortress of Aggersborg as well as ensuring public access to the area to the extent such access is consistent with other preservation aims.

The southernmost part of the area lies within the coastal protection zone designated by the Danish Nature Protection Act §§ 8 and 15. This means that no changes may be made

to the status of the area. The area also lies in conjunction with protected habitats such as meadows and coastal meadows which are regulated by the Danish Nature Protection Act § 3.

The area lies within the International Nature Reserve no. 16 for Løgstør Bredning, Vejlerne, and Bulbjerg. This means that the area is governed by chapters 13 and 14 of the Environmental Objectives Act with respect to the designation and altering of international nature reserves and with respect to planning for nature; the area is similarly governed by chapter 2a of the Danish Nature Protection Act.

Denmark is obliged to produce a Natura 2000 Plan for international nature reserves. This plan is presently being drafted, and it is required to fix a target for nature preservation. The municipality must, on the basis of the Natura 2000 Plan, draw up an action plan for achieving the targets it specifies. Until the Natura 2000 Plan and the action plan are completed, the international nature reserve is regulated by the following guidelines: 7.1.1. Within international nature reserves (Natura 2000 areas), it is not permitted to designate new areas as urban zones or areas for holiday homes, to plan large, new traffic facilities or associated installations such as service stations, maintenance depots, or similar structures, to plan new or significant expansions of other traffic and technical facilities such as airports, airfields, railways, harbours, landfill near coastal waters, overhead power lines, wind-turbine clusters and parks, refuse dumps, and other deposit facilities or to designate new areas for aggregate land extraction .

### **Fyrkat**

The property is protected pursuant to the Danish Museum Act § 29e – see annex 5b\_a1.

The property is mentioned in the municipal plan which, in turn, is regulated by the Danish Planning Act– see annex 5b\_a2.

The property is designated as an “archaeological site of irreplaceable cultural importance” (140707-80), which is an area of land that contains known archaeological remains of national (international) scientific, cultural or historical importance. This designation does not have protective effect but is of an informative character.

The property is protected by four protection orders:

- Document relating to the protection order of 13 April 1963 (Nature Conservancy Board decision) – see annex 5b\_f1
- Document relating to the protection order of 17 July 1964 (Danish Nature Conservancy Board of Appeal decision) – see annex 5b\_f2
- Document relating to the protection order of 4 June 1981 (Danish Nature Conservancy Board decision with regard to a supplementary protection order) – see annex 5b\_f3
- Document relating to the protection of areas in the Onsild river valley of 13 November 2006 – see annex 5b\_f4

A total of ten servitudes have been recorded on the property. In relation to Fyrkat, the following are relevant:

In the 2009-2013 Municipal Plan for Mariagerfjord Municipality, the area (including the buffer zone) is covered by the following guidelines:

- Wetland area
- Historic environment worthy of conservation
- Natural Amenity Area
- Low-lying area
- Landscape of special value
- Area of geological value
- Coastal zone

Fyrkat is mentioned in the municipal plan under the following categories:

Historic environments:

2.14.1 Designation of valuable historic environments. In the municipal plan for Mariagerfjord Municipality, annex 2.14, valuable historic environments are specified that should be protected in urban zones, areas with holiday homes, and rural zones. The designated historic environments are to be included in future district plans. Furthermore, conservation-related district plans should be formulated in order to secure these environments for posterity.

Furthermore, afforestation is seen as being undesirable in the area.

Fyrkat and the Onsild river valley are included in a number of designations relating to nature, landscape, and historic environment that protect the property against interventions or new development. The guidelines for land use within the designated areas all have as their primary aim to protect these areas against interventions or new development that may remove or disturb natural values such as flora and fauna, landscape values such as the river valley, and historic environment values such as Fyrkat. As a consequence, the property itself is well-protected. Through its administration, the municipality is to ensure that the guidelines and legislation are observed and respected. Fyrkat is conspicuous in the landscape, and the property is visible from the town of Hobro.

### **Trelleborg**

The property is protected pursuant to the Danish Museum Act § 29e – see annex 5b\_a1.

The property is protected by a protection order for the Tude River, the Tude river valley, and the Vårby river valley – see annex 5b\_t1.

The property is mentioned in the municipal plan which, in turn, is regulated by the Danish Planning Act – see annex 5b\_a2.

The property is designated as an “archaeological site of irreplaceable cultural importance” (100701- 5), which is an area of land that contains known archaeological remains of national (international) scientific, cultural or historical importance. This designation does not have protective effect but is of an informative character.

The *Danish Nature Protection Act* and the *Danish Planning Act* are enforced by Slagelse Municipality.

The Slagelse 2013-2025 Municipal Plan was approved by the Slagelse Town Council on 16 September 2013.



The municipal plan's guidelines cover Trelleborg with respect to the following areas:

11.1 Tourist areas – “Countryside area” as an historical visitor centre that can be extended.

3.5 Regional trails – Trelleborg is served by the regional trail running from Korsør, south of Slagelse, to Kongskilde.

9.3 Coastal Zone – Trelleborg falls within a coastal zone, which is a planning and protection zone for new development with non-coastal functions.

5.3 Historic environments – Trelleborg, together with the Vårby river valley, is covered by historic environment resolutions.

9.4 Landscape protection – The area around Trelleborg is a designated river valley with the highest level of protection

9.6 Nature protection – the area around Trelleborg is a zoned core area for nature conservation

Trelleborg is mentioned in the municipality plan under the following categories:

The Slagelse 2013-2025 Municipal Plan, approved by Slagelse Town Council on 16 September 2013. The main structure of the municipal plan includes an intent to continue the expansion of Trelleborg Museum – visitor centre, etc. Trelleborg is covered by municipal plan area LB3.

The municipal plan contains the following provisions:

The main structure of the municipal plan should be implemented with respect to land use, provision of services, recreational opportunities, etc.

The principles for the expansion of the traffic network should be followed –with reference to regional recreational trails, although special account should be taken for nature protection.

The area is used for agriculture, horticulture and forestry, recreation and residential purposes. Non-agricultural/horticultural/forestry businesses may not be established in the area.

The area will remain a rural zone.

Existing residences should continue to accommodate year-round occupancy.

Replacement houses are normally not permitted to be established.

Recreational activities should be adapted to conservation interests.

New construction, alterations, and extensions should respect the traditional local building tradition – for example, with respect to building form, roof construction, dormers, and choice of materials, including doors and windows.

Technical facilities, including those relating to renewable energy, can only be established in exceptional circumstances.

Extensive account should be taken with respect to the conservation of animal and plant life in the area as a whole, potentially through protective legislation

The municipal plan's guidelines for rural areas generally prohibit new use without a connection to agriculture. The area around Trelleborg is also governed by regulations for coastal zone and the highest landscape protection.

The area around Trelleborg is governed by District Plan no. 174, Museum at Trelleborg, approved by the Slagelse Town Council on 20 June 1994 (see annex 5d\_t1). This district plan only covers the property with title no. 17a, Hejninge Town, Hejninge. This is the area on which the museum has been built and borders on the actual area of the monument.

A new exhibition building project, New Trelleborg, is planned by Slagelse Municipality in cooperation with the National Museum of Denmark, initiated on 1 January 2014. A new visitor centre with a modern exhibition shall replace the existent museum building. The realisation of the project depends on external funding. There will be a new District Plan for the area when a new building project is done.

#### Planning of trails

The Trelleborg area is served by National Cycle Route no. 6, which runs east-west across Zealand from the Copenhagen area via Kongskilde and Slagelse to Korsør. This cycle route has been extended by a bridge over the Vårby River, which means that cyclists and pedestrians no longer encounter a dead end at Trelleborg but are able to continue across the bridge towards Korsør. This national trail is included within the municipality's planning as the main tourist trail from Slagelse to Trelleborg.

#### Road planning

Trelleborg is today linked to the road network via Trelleborg Allé, which branches off Hejningevej and dead-ends at Trelleborg's car park. Trelleborg is sign-posted from Korsørvej and, on the motorway, by a national information sign.

#### Protection planning

The area around Tude river valley from Trelleborg to the Great Belt is covered by a protection plan. The protection plan specifies that the area must be maintained in its present natural state and may not be developed. The western boundary of the district plan area coincides with that of the protected area.

#### Restoration and conservation project in the river valley

Trelleborg is situated in a natural river valley with wet meadows and marshes along the river. The area between Trelleborg and the Great Belt is protected, and the Municipality of Slagelse is currently working on a large-scale restoration and conservation project in the river valley. The project will support the story of the strategic position of Trelleborg along the coast of Great Belt. The intent is to restore the meadows and marshes in the delta area. The project is estimated to cost DKK 45 million.



*Figure 4.3 The Trelleborg fortress with the circular rampart, ditch, and buildings marked or recut ©Viking Fortress Trelleborg/Anne-Christine Larsen.*

## 5 Values

The UNESCO's World Heritage committee defines a value as being of outstanding universal importance if it meets one or more of the precisely-defined value criteria of UNESCO. The “The Trelleborg Fortresses” component part meets criteria iii and iv, which read:

(iii) to bear a unique or at least exceptional testimony to a cultural tradition or to a civilization which is living or which has disappeared.

The Viking Age Trelleborg-type fortresses are exceptional evidence of the monumental and defence-related building works of the time. There are no contemporary parallels either in the Nordic countries or the rest of Europe.

(iv) to be an outstanding example of a type of building, architectural or technological ensemble or landscape which illustrates (a) significant stage(s) in human history.

The Viking Age Trelleborg-type fortresses with their stringent geometrical and symmetrical construction represent the most monumental manifestation of central power in the late Viking Age. They clearly show a strategic intent by their position in the landscape.

## Values:

Value grouping	The most important values associated with the Viking Age Trelleborg-type fortresses	Are these values crucial for inclusion on the World Heritage List?	Aims
Cultural value	The actual ring fortresses	Yes	To conserve and protect the Trelleborg-type fortresses as evidence of the Viking Age's monumental and defensive constructions. In addition, to ensure that, in future, the ring fortresses stand as examples of central power during the Late Viking Age.
Landscape value	The strategic setting	Yes	With their position in the landscape, they demonstrate a strategic purpose without any shadow of a doubt.
Economic values	Tourist attraction	No	To increase awareness of the World Heritage Site and develop it as a tourist attraction.
Research and educational values	Research into the interpretation and presentation of the Viking Age	Yes	To create conditions enabling the interpretation of the past and understanding of the present, and to take an active part in creating the future.
Other social values	The Trelleborg-type fortresses shape the framework for practicing Viking Age religions  Developing volunteer work in, e.g., dissemination programmes	No	To shape conditions for realising Viking Age religions  To strengthen the social commitment and integration into the history of the fortresses and the Viking Age of volunteers and to support the aims of lifelong learning

## 6 Threats to the value of the property

In general terms, the property is not threatened by development or natural conditions. The property is located within areas that are protected by other legislation. If, even in the light of this, one factor is to be identified that could, with time, represent a threat, this must generally be seen as over-exploitation of the property in the form of visitor erosion of the terrain. A significant part of the property's authenticity lies in its appearance in the landscape, and existing legislative and planning regulations already secure this. It is by way of reinforcement that this factor is even mentioned as a potential future threat.

Cause and threat	Requires protection of which values?	Which management initiatives are necessary?
<p><u>Cause:</u> Too many visitors to the property</p> <p><u>Threats:</u> Erosion of the grass cover</p>	Bank, ditch, and fortress area	The owners (the Danish National Museum, the Danish Nature Agency), the user (the Historical Museum of Northern Jutland and the National Museum of Denmark) as well as the monitoring authority (Danish Agency for Culture) ensure through daily monitoring that the property does not become overburdened.
<p><u>Cause:</u> Incorrect care of the areas</p> <p><u>Threats:</u> Erosion of the grass cover</p>	Bank, ditch, and fortress area	The parties maintaining the property ensure that, through correct care and maintenance, it does not become overburdened.
<p><u>Cause:</u> Construction work</p> <p><u>Threats:</u> Construction of houses, roads, and wind turbines</p>	The property's appearance in the landscape	Future consolidation of the planning initiatives in relation to municipal plans, additional protective legislation, and district plans

## 7 Management measures

## **Activities:**

A large number of activities take place within the “Trelleborg Fortresses” component part. These may lead to increased pressure and thereby constitute a threat to the property. Accordingly, it is necessary for these activities to be controlled through management initiatives. At the annual meeting of partners, the interpretation and presentation of the component part are discussed. Included within these discussions are already implemented and future interpretation and presentation initiatives.

The Danish Agency for Culture is responsible for Denmark's ancient monuments. The agency has delegated the statutory monitoring of ancient monuments to a number of Danish museums. In practice, the Historical Museum of Northern Jutland is responsible for monitoring Aggersborg and Fyrkat; Roskilde Museum monitors Trelleborg.

## **Aggersborg**

As owner of the property, the Danish Nature Agency is responsible for care and daily monitoring. Protection and management of the property takes place by way of regular care in the form of cutting grass in flat areas and on the rampart itself. Cutting grass on the rampart is done in a gentle and effective way:

- The sloping sides: With a grass mower mounted on a crane, i.e., the machine runs beside the rampart and not on it. Where the crane cannot be used, a manual brush cutter is employed.
- The top of the rampart: a garden tractor (350 kg. incl. driver) is used approx. three times a year.
- Fences prevent entry by unauthorised vehicles but allow public access by foot.
- In connection with the weekly cleaning of the exhibition building, the rampart area is monitored and checked.

The grass is cut on the sloping sides of the rampart twice a year to ensure that perennial vegetation does not become established. It is the Danish Nature Agency's general policy that ancient monuments should have an even, stable grass cover. Grass has the most stable and wear-resistant network of roots so that wear and erosion can be avoided or minimised. The nature protection order contains the same requirements. At the same time, the even grass cover does not blur the contours and outline of the ancient monument. Once or twice a year, the grass is cut on the flat area, and the cut grass is removed. This ensures both short grass and the removal of nutrients, so the ideal state of preservation is maintained.

## **Fyrkat**

The Historical Museum of Northern Jutland carries out daily monitoring and subsequent care of the site and immediately adjoining areas: Steps and trails are cleared of weeds prior to the start of the season. Mole control and the levelling out of molehills are carried out as required. Grass cutting takes place in the period from 15 April to 30 September – about 27 times – on the surfaces within the fortress and the area around the reconstructed longhouse. The path on the rampart is cleared of vegetation on a regular basis during the same period. Mariagerfjord Municipality has fenced the property, making it easier for sheep to graze the area. Mariagerfjord Municipality cares for the

privately-owned areas in the buffer zone when this serves to promote preservation aims and is not in conflict with the preservation regulations.

Mariagerfjord Municipality is expected to have formulated a maintenance plan for the privately-owned, protected areas within the buffer zone by 2015. Finally, the municipality, as a step in its nature quality plan as described in the 2010-13Municipal Plan, will regularly monitor the natural amenity areas in the river valley.

### **Trelleborg**

The National Museum of Denmark owns the protected area and the reconstruction of the Trelleborg house. The Trelleborg Viking Fortress/the National Museum of Denmark monitor the fortress area daily. In addition to grazing by sheep, the sloping sides of the rampart are cut twice yearly with special mowing machines in a gentle and effective way, which ensures minimal erosion and wear. The protected area is fenced, and this hinders most vehicular access as well as controlling the entry of cattle to the area. There is, however, easy visitor access to the area. The Trelleborg Viking Fortress carries out the necessary care and maintenance of the area. Maintenance has mostly consisted of mowing the grass with special machines on the rampart and grazing by sheep. A delicate balance has been found between the number of grazing animals and the need for grazing; this means that the fortress is not exposed to excessive erosion.



*Figure: Aggersborg. Photo Esben Schlosser Mauritsen.*

## **8 Economy and resources**

In connection with implementation of the management plan for the Trelleborg Fortresses, a number of human and economic resources are expected to be available for the work in the future. These are individual for each of the three fortresses; despite this, they result in the preservation of the property. A description is given below of what is done at each of the three fortresses.

The property constitutes an important element in the Danish Agency for Culture's updating of the presentation of prehistoric monuments in Denmark – in a tangible form via the project 'Danish Prehistory in the Landscape', which has the aim of restoring the property and presenting its history by way of on-site signboards as well as through text, pictures, and sound via digital platforms. The stories on site are presented by way of a completely new national signboard concept. The signs give an account in Danish, English, and German of the time period and the actual locality. In addition, a small symbol guide has been developed. The digital part of the project is accessible as a part of the Danish Agency for Culture's other presentation and communication projects.

Furthermore, in connection with the project 'Danish Prehistory in the Landscape' ['Danmarks Oldtid i Landskabet'] in 2011-2014, the Danish Agency for Culture has upgraded the standard of the interpretation, presentation, and maintenance at the three Trelleborg-type fortresses. A grant from the 'A.P. Møller and Wife Chastine McKinney Møller's Foundation for General Purposes' has raised the profile of Danish prehistory in the landscape. Through the work of this project, it will be possible to experience Denmark's earliest history *in situ*, in the landscape, thereby providing a supplement to a major exhibition on Danish prehistory at the Danish National Museum.

### **Aggersborg**

The day-to-day operation of Aggersborg is taken care of by staff from the Danish Nature Agency, which ensures regular continuing training of its staff in the care of natural amenity areas and ancient monuments.

The Danish Nature Agency's weekly monitoring is a fixed routine. Pursuant to this, the park ranger monitors the area if this is requested by foresters and others or the Danish Nature Agency twice a year. Staffing level: Daily monitoring: Forester. Overall monitoring and administration: Park Ranger. Head: Park Supervisor. Monitoring of the protected ancient monuments is carried out every five years by archaeologists from the Historical Museum of Northern Jutland.

In addition to information in three languages and pictures displaying the construction of the fortress, its history, etc., the exhibition building also has toilet facilities for the disabled. The exhibition is open all year round. A counter records the number of visitors on the rampart area. On average for the first ten years of the facility's existence, visitor numbers are 23,000 annually. However, the true total is thought to be even greater as a number of visitors make use of an entrance at the southern end of the site. Annual visitor numbers of 30,000 are expected in the future. The Danish Nature Agency is responsible for care and maintenance of the area.

The grass cover on the rampart, ditch, and the fortress area: Undesirable species such as stinging nettles (which block out other species and have a loose root network) are kept down by the above-mentioned mowing. Erosion on the rampart off the trail and steps is virtually no a problem since the cessation of sheep grazing.

### **Fyrkat**

Staffing levels and money: The day-to-day operation of Fyrkat is taken care of by staff from the Historical Museum of Northern Jutland, which receives financial support from both the Danish State and Mariagerfjord Municipality. The interpretation and presentation of Fyrkat is updated through the Danish Agency for Culture's project 'Danish Prehistory in the Landscape'.

If Mariagerfjord Municipality wishes to carry out maintenance operations in the area, they take place without any expenses being incurred by the site owners. In 2010, the



municipality has earmarked in its budget for nature preservation an annual sum of approx. DKK 800,000.

The interpretation and presentation of the area is primarily financed by the municipality's funds for nature presentation and promotion – in 2010, DKK 150,000. A small part of the expenses for this communication work may be expected to be paid from external funds received from foundations, other organisations, or the Danish State.

The management plan for Fyrkat will be taken up for evaluation at least every two years at a meeting including representatives from the Danish National Museum (owner), the Historical Museum of Northern Jutland (daily operations), the Municipality of Mariagerfjord (local authority), and the Danish Agency for Culture (national authority).

A revision of the management plan will be made every four years. Motions for changes must be submitted the year before implementation. Approval of changes requires unanimity.

#### Monitoring

The Historical Museum of Northern Jutland carries out monitoring of the property as well as subsequent maintenance of the property and the immediately adjoining areas: Steps and trails are cleared of weeds prior to the start of the season. Mole control and the levelling out of molehills are carried out when required. Grass mowing takes place in the period from 15 April to 30 September – about 20 times – on the surfaces within the fortress and the area around the reconstructed longhouse. The path on the rampart is cleared of vegetation on a regular basis during the same period – about 3 times. When the Viking farm at Fyrkat Viking Centre is open, the house by the fortress is opened up before the site is opened in the morning and is locked again at closing time in the afternoon.

Mariagerfjord Municipality carries out maintenance of the privately-owned areas in the buffer zone when this serves to promote preservation aims and is not in conflict with the preservation regulations. Prior to undertaking care and maintenance, the municipality formulates a maintenance plan that describes the operations to be carried out. Private landowners may choose to implement the described measures themselves. If an agreement cannot be reached with the owners about the maintenance plan, the matter is put before the Nature Conservancy Board.

At the moment, Mariagerfjord Municipality has not reached a decision about whether to formulate a maintenance plan for the area, but it is expected that such a plan will be formulated within the next two years.

Furthermore, Mariagerfjord Municipality is in the process of drafting an interpretation/presentation plan for the area (the buffer zone). This plan describes and prioritises the interpretation and communication of the natural and cultural-historical values in the area, excluding the actual fortress itself. The plan is expected to be completed in the spring of 2015 and is being co-ordinated with the project 'Danish Prehistory in the Landscape'.

Mariagerfjord Municipality has fenced in the property, making it easier to graze the area with sheep. Finally, as a step in its nature quality plan and as described in the 2010-13 Municipal Plan, the municipality will regularly monitor the natural amenity areas in the river valley.



*Figure: The fenced area.*

The property constitutes an important element in the Danish Agency for Culture's updating of prehistoric monuments in Denmark – in a tangible form via the project 'Danish Prehistory in the Landscape', which aims at restoring the property and presenting its history by way of on-site signboards as well as through text, pictures, and sound via digital platforms. The stories are presented on-site by way of a completely new national signboard concept that has been developed in co-operation with the Danish Nature Agency and the Agency for Palaces and Cultural Properties. The signs provide an explanation in Danish, English, and German of time period and the actual locality. In addition, a small symbol guide has been developed. The digital part of the project is accessible as a part of the Danish Agency for Culture's other presentation and communication projects.

A reconstruction of one of the longhouses excavated inside the fortress has been built about 100 m from the monument; and, about 1 km from the fortress, a visitor centre has been established – Fyrkat Viking Centre. The latter comprises a reconstruction of a Viking farm from the time of the fortress, consisting of about a dozen buildings of different sizes. Various activities show daily life in the Viking Age. Next to the fortress stands Fyrkat Møllegård, a listed, half-timbered farmhouse with a more than 200-year-old, partially-functioning watermill. A restaurant and public conveniences have been installed in the buildings. At Hobro Museum (Vestergade 21, DK-9500 Hobro), located approx. 2 km from the fortress, archaeological finds from the Fyrkat site are exhibited.

The total number of visitors to Fyrkat and Fyrkat Viking Centre between May and September is just under 30,000. At Fyrkat and Fyrkat Viking Centre, tickets are issued from the information desk; whereas an electronic counter has been installed at Fyrkat itself.

- Daily monitoring of the ancient monument: Property manager at the Historical Museum of Northern Jutland.
- The artefacts at Hobro Museum are under the care of a conservator from the Historical Museum of Northern Jutland. The artefacts kept at the Danish National Museum are in the care of a museum conservator.
- Overall monitoring and administration of the protected ancient monument is carried out by the Danish National Museum and the Historical Museum of Northern Jutland.
- Overall responsibility for the protected ancient monument: The Danish National Museum, which has delegated practical responsibility to the Historical Museum of Northern Jutland.

### **Trelleborg**

The day-to-day operations of Trelleborg Viking Fortress are funded primarily by Slagelse Municipality and the Danish National Museum.

Daily monitoring of the ancient monument is carried out by Trelleborg Viking Fortress. Overall monitoring and administration of the ancient monument and the National Museum of Denmark's artefacts are carried out by the museum curator at Trelleborg and the representative of the National Museum (owner). Overall responsibility for the ancient monument and the museum is The National Museum of Denmark.

The external maintenance of the museum building, owned by Slagelse Municipality, is carried out by the municipality. The Trelleborg Viking Fortress is responsible for the internal maintenance of the museum building and allocates each year resources for this purpose. The museum's staff carries out the practical part of this work.

The Trelleborg Viking Fortress also allocates resources each year for the general maintenance of grass areas outside the protected area along with the other outdoor areas, outdoor toilets, storage buildings, and the reconstructions of Viking Age houses. The museum carries out the practical part of this work in cooperation with Slagelse Municipality; this also includes running the museum's café during most of the opening season.

The Trelleborg fortresses constitute an important element in the Danish Agency for Culture's updating of prehistoric monuments in Denmark – expressed in a tangible form in the project 'The Prehistory of Denmark in the Landscape' – which has the aim of improving the presentation of prehistoric sites by way of on-site signboards as well as through text, pictures, and sound, using digital platforms. The stories are presented on-site by way of a completely new national signboard concept that has been developed in conjunction with the Danish Nature Agency and the Danish Agency for Palaces and Cultural Properties. The signs provide an account in Danish, English, and German (on the island of Bornholm, also in Polish) of the prehistoric period and the actual locality. In addition, a small symbol guide has been developed. The digital part of the project is accessible as a part of the Danish Agency for Culture's other presentation and communication projects and will be coordinated with the exhibition at the National Museum of Denmark. The three ring fortresses are included in this project. At Trelleborg, e.g., the existing concrete posthole markers have been cleared of vegetation; the entrance to the fortress will be changed into a more authentic version, and the information boards will be renewed.

For many years, special initiatives encompassing research projects, major exhibitions, publications, and other interpretation and presentation work have been financed primarily by external funding but also partly by the museum's own resources.

A new exhibition building project, New Trelleborg, is planned by Slagelse Municipality in cooperation with the National Museum of Denmark. This involves the establishment of an international knowledge and visitor centre, which can provide a foundation for high-quality research, interpretation, presentation, and education and promote a productive interplay between these areas. The realisation of this project, which will encompass new modern initiatives for interpretation and presentation, will offer a unique combination of events, activities, and experiences to the public. Slagelse Municipality has earmarked DKK 25 million to get the project started. The realisation of the project depends on external funding.

At Trelleborg Viking Fortress, the museum manager has a degree in prehistoric archaeology from the University of Copenhagen and is also a member of the university's corps of examiners. All staff members receive regular supplementary training. The museum has an ongoing collaboration with the municipalities involved, the Danish Agency for Culture, the National Museum of Denmark, the University of Copenhagen, and Roskilde University with respect to various academic, conservation, and management aspects of the daily work.

Examples of research projects include *The King's Fortresses*, which is funded by grants from foundations, and the reconstruction of the smithy in the museum area at Trelleborg, which is financed by the Danish Agency for Culture. An additional example is the research, interpretation, and presentation project *Belmont – Investigations of Viking Age Farms and Settlement Patterns of the Vikings in the North Atlantic*, funded by various Scottish authorities together with the Danish Agency for Culture.

The museum contains exhibition areas, offices, a reception with ticket sales and a shop, café, public toilets, etc. There is a car park for buses and cars as well as a small area with some small, reconstructed Viking Age buildings. The exhibition (in Danish and English) deals with the Viking Age, Trelleborg's history, and the fortresses and their function. In addition to posters and models, original finds from excavations in the 1930s and 1940s are exhibited. There is an impressive view of the ring fortress from the museum building.

Visitor numbers vary from year to year, but the figure was just below 30,000 in 2012. As entrance to Trelleborg is free of charge out of season and outside opening hours, a larger number of visitors should probably be stated. The museum is open to the public during the season which runs from 1 April to 30 October. In addition to the actual ring fortress with associated outer ward, the Museum at Trelleborg (now Trelleborg Viking Fortress) also comprises an early reconstruction of a Trelleborg longhouse (built in 1941), outdoor public toilets, a tool store, a poster exhibition, and an early model of the fortress. All the above-mentioned facilities are located directly to the east of the protected area with the ring fortress. A system of paths leads the public from the museum building to the ring fortress and the reconstructed Trelleborg house.

The reconstructions form the framework for the museum's re-enactment activities, which each year attract visitors from home and abroad. Trelleborg Viking Fortress, therefore, offers interpretation, presentation, and education “on location”, i.e., in one of the places where the Vikings lived and fought more than 1000 years ago. The interpretation and presentation facilities at Trelleborg offer a wide range of exciting educational activities and experiences for children and adults alike. General visitor numbers for Trelleborg have for many years been around 30,000 annually.

## 9 Monitoring

### **Aggersborg**

The Danish Nature Agency's weekly monitoring is a fixed routine.

The Historical Museum of Northern Jutland has overall responsibility on behalf of the Danish Agency for Culture for monitoring the protected ancient monuments in the region and, therefore, also Aggersborg.

Contact information:

The Danish National Museum, Frederiksholms Kanal 12, DK-1220 Copenhagen K:  
Chief Curator Michael Andersen, [michael.andersen@natmus.dk](mailto:michael.andersen@natmus.dk)

Vesthimmerland Museum, Søndergade 44, DK-9800 Aars: Museum Director Broder Berg, [mail@museumscenteraars.dk](mailto:mail@museumscenteraars.dk)

Vesthimmerland Municipality, Management Sekretariat, Himmerlandsgade 27, DK-9600 Aars: Planning Officer Anette Kümpel, [aku@vesthimmerland.dk](mailto:aku@vesthimmerland.dk)

### **Fyrkat**

The Historical Museum of Northern Jutland, via its section Fyrkat Viking Centre, is responsible for daily monitoring of the property. In conjunction with Mariagerfjord Municipality and the Danish National Museum, it formulates a maintenance plan for the area.

The Historical Museum of Northern Jutland has the overall responsibility on behalf of the Danish Agency for Culture for monitoring the ancient monuments in the region and, therefore, also Fyrkat.

Contact information:

The Danish National Museum, Frederiksholms Kanal 12, DK-1220 Copenhagen K:  
Chief Curator Michael Andersen, [michael.andersen@natmus.dk](mailto:michael.andersen@natmus.dk)  
Construction Manager Ulrik Abild, [Ulrik.Abild@natmus.dk](mailto:Ulrik.Abild@natmus.dk)

Historical Museum of Northern Jutland, Algade 48, DK-9000 Aalborg: Museum Director Lars Christian Nørbach, [historiskmuseum@aalborg.dk](mailto:historiskmuseum@aalborg.dk)

Mariagerfjord Municipality, Department for Nature and Ground Water, Østergade 22, DK-9510 Arden: Biologist Anders Horsten, [anhor@mariagerfjord.dk](mailto:anhor@mariagerfjord.dk)

### **Trelleborg**

Roskilde Museum is responsible for monitoring Trelleborg on behalf of the Danish Agency for Culture.

The formulation and execution of the maintenance plan for the protected area is done by Trelleborg Viking Fortress/the National Museum of Denmark in cooperation with Slagelse Municipality. Trelleborg Viking Fortress is responsible for daily monitoring and supervision of the site.

Contact information:

The Danish Agency for Culture, H.C. Andersens Boulevard 2, DK-1553 Copenhagen V, Denmark, [post@kulturstyrelsen.dk](mailto:post@kulturstyrelsen.dk), [www.kulturstyrelsen.dk](http://www.kulturstyrelsen.dk)

The Danish National Museum, Frederiksholms Kanal 12, DK-1220 København K:  
Chief Curator Poul Otto Nielsen, [poul.otto.nielsen@natmus.dk](mailto:poul.otto.nielsen@natmus.dk), [www.natmus.dk](http://www.natmus.dk)  
Construction Manager Ulrik Abild, [Ulrik.Abild@natmus.dk](mailto:Ulrik.Abild@natmus.dk)

Trelleborg Viking Fortress, Trelleborg Allé 4, DK-4200 Slagelse: Museum Curator  
Anne-Christine Larsen, [trelleborg@natmus.dk](mailto:trelleborg@natmus.dk), [www.vikingeborgen-trelleborg.dk](http://www.vikingeborgen-trelleborg.dk)

Slagelse Municipality, Department for Culture and Leisure, Rådhuspladsen 7, 1<sup>st</sup> floor,  
DK-4200 Slagelse: Head of Culture and Leisure Department, [slagelse@slagelse.dk](mailto:slagelse@slagelse.dk),  
[www.slagelse.dk](http://www.slagelse.dk)

Roskilde Museum, St. Ols Gade 15, DK-4000 Roskilde, [roskildemuseum@roskilde.dk](mailto:roskildemuseum@roskilde.dk);  
[www.roskildemuseum.dk](http://www.roskildemuseum.dk)



*Figure: Fyrkat. Photo Esben Schlosser Mauritsen.*

## 10 Annex List

### General

**Annex 5b\_a1** – The Danish Museum Act § 29e:

It is prohibited to alter the state of ancient relics or monuments. Parcelling out, land registration or transfer of ownership of land whereby new boundaries are established through ancient relics or monuments is also prohibited.

Section 2.

The types of ancient relics or monuments protected pursuant to subsection (1) are listed in the Annex to this Act.

#### Section 3.

Certain types of ancient relics or monuments as listed in the Annex to this Act are subject to the protection provided by subsection (1) only when the owner has received notification of their presence from the Minister for Culture. For ancient relics or monuments that are under the ground surface or under buildings, the Minister for Culture may determine, when making this notification, that the protection provided pursuant to subsection (1) shall be extended to the boundary of the property.

#### Section 4.

The Minister for Culture shall state on request which protected ancient relics or monuments are located on a property and the area they occupy.

#### Section 5.

The Minister for Culture may have a notice made pursuant to subsection (3) on the presence of an ancient relic or monument to be registered in the Land Register in respect of the property concerned.

#### § 29 f.

Soil treatment, the application of fertilizer and planting are prohibited on ancient relics or monuments and within a distance of 2 m from them. The use of metal detectors is also prohibited.

#### **Annex 5b\_a2** – Danish Planning Act – the law in relation to planning

§ 11a. The municipal plan shall contain guidelines on:

- 1) the designation of areas as urban zones and summer cottage areas;
- 2) the location of areas designated for various urban land uses, such as residential purposes, business purposes, the location of public institutions, service purposes, urban regeneration areas, etc.;
- 3) the municipal structure of retail trade, including the delimitation of the 2007 central part of a town or city district and any secondary centres, and establishing the maximum permitted gross floor space for retail trade purposes and the maximum permitted gross floor space for the individual shops in the specific parts of the municipality, cf. § 5l, § 5m, § 5n, § 5o, § 5p, § 5q and § 5r.
- 4) the location of transport facilities;
- 5) the location of technical installations;
- 6) the location of areas designated for enterprises, etc., that require special siting to prevent pollution;
- 7) the location of the projects specified in § 11g;

- 8) ensuring that areas exposed to noise are not designated for noise-sensitive purposes unless the future use can be secured against noise nuisance, cf. § 15a;
  - 9) the location of areas to be used for leisure purposes, including allotment garden areas and other recreational areas;
  - 10) the administration of agricultural interests, including designating and protecting especially valuable agricultural areas;
  - 11) the location of afforestation areas and areas where afforestation is not desired;
  - 12) low-lying areas, including the location of low-lying areas that can be re-established as wetlands;
  - 13) the administration of interests in nature protection, including the location of nature reserves with special interests in nature protection, of ecological corridors and of potential nature reserves and potential ecological corridors;
  - 14) securing the cultural and historical assets worthy of conservation, including the location of valuable cultural environments and other important cultural and historical assets worthy of conservation;
- 
- 15) securing the landscape assets worthy of conservation and the location of areas with valuable landscape features, including large, cohesive landscapes;
  - 16) securing the geological assets worthy of conservation, including the location of areas with special geological value;
  - 17) the use of watercourses, lakes and coastal waters;
  - 18) land use in the coastal zone in accordance with the provisions of § 5a, subsection 1 and § 5b; and
  - 19) the implementation of rules established or decisions made pursuant to § 3 and § 5j of this Act.

**Annex 5b\_a3 - Danish Nature Protection Act:**

§ 1. The law should act to protect the country's (i.e., Denmark's) nature and environment so that society is able to develop on a sustainable basis with respect to living conditions for people and the conservation of animal and plant life.

Section 2. In particular, the law aims to:

- 1) protect nature with its population of wild animals and plants together with their habitats and the landscape, cultural-historical, scientific, and educational values,
- 2) improve, rehabilitate or create areas which are significant for wild animals and plants and for landscape and cultural-historical interests, and
- 3) give the public access to move freely and spend time in nature as well as improving possibilities for outdoor activities.

Section 3. In the administration of the law, emphasis should be placed on the significance an area may have for the general public due to its location.



## **Aggersborg**

**Annex 5b\_a4** - Reg. no. 07784.00. Protection with respect to: Aggersborg – Viking Fortress.

## **Fyrkat**

**Annex 5b\_f1** - Document relating to the protection order of 13 April 1963 (Nature Conservancy Board decision).

**Annex 5b\_f2** - Document relating to the protection order of 17 July 1964 (Nature Conservancy Board of Appeal decision) -

**Annex 5b\_f3** - Document relating to the protection order of 4 June 1981 (Nature Conservancy Board decision with regard to a supplementary protection order).

**Annex 5b\_f4** - Document dated 13 November 2006 relating to the protection of areas in the Onsild river valley.

## **Trelleborg**

**Annex 5b\_t1** - The property is protected by a registered protection order for the Tude River, Tude river valley, and Vårby river valley