

# JELLING

## MANAGEMENT PLAN 2013



United Nations  
Educational, Scientific and  
Cultural Organization



**Jelling Mounds,  
Runic Stones and Church**  
inscribed on the World  
Heritage List in 1994

# Table of Contents

<b>Preface</b>	<b>3</b>
<b>1. Purpose of the management plan</b>	<b>4</b>
<b>2. Introduction and background</b>	<b>5</b>
<b>3. Responsibility for the World Heritage Site</b>	<b>7</b>
<b>4. National legislation</b>	<b>9</b>
4.1 Rules respecting the management plan for the Jelling Monuments	9
4.2 Municipal plan	10
4.3 Local plans	12
<b>5. Values – Identification of vision, values, and plans for the Monument Area</b>	<b>15</b>
5.1 Vision	17
5.2 Values	18
5.2.1 Economic values	18
5.2.2 Research values	19
5.2.3 Educational and informational values	22
5.2.4 Social values	22
5.3 Strategic plan for the Jelling Monuments	23
5.4 Comprehensive plan for the Monument Area in Jelling	23
<b>6. Threats to the area's values</b>	<b>25</b>
<b>7. Administrative measures</b>	<b>30</b>
7.1 Worship services, religious ceremonies, and other activities	30
7.2 Tourists	31
7.3 Recreational and cultural activities	31
<b>8. Economic resources and implementation</b>	<b>32</b>
8.1 Finances	32
8.2 Implementation plan	33

<b>9. Monitoring</b>	<b>34</b>
9.1 Rules on inspection of church and churchyard	34
9.2 Annual financial planning for church and monument area	35
<b>Danish Management System</b>	<b>39</b>
<b>10. Appendices</b>	<b>41</b>
Appendix A UNESCO's criteria for World Heritage Sites	41
Appendix B Checklist prepared for use in the dean's inspection	42

## PREFACE

This management plan is based on the current management plan from 2010 for the World Heritage Site, the Jelling Monuments, which includes the Jelling burial mounds, runic stones, and church. The plan has been revised to meet the requirements that follow from the expansion of the monument to include all the structures from Viking times in the palisade area and from Jelling's participation in the serial nomination, Viking Age Sites in Northern Europe.

The Jelling Monuments were added to UNESCO's list of World Heritage Sites in 1994 and, on that basis, they must live up to the World Heritage Convention.

As the national authority responsible, the Danish Agency for Culture must make sure that the Convention and operational guidelines are observed. The sites are responsible for ensuring that their management plans are kept up to date.

The purpose of the World Heritage Convention is to preserve cultural and natural values that are so unique that they must not be lost to mankind. In order to ensure this, guidelines have been drawn up for the sites that require the preparation of management plans, cf. section II.F of the operational guidelines for the implementation of the World Heritage Convention.

The Jelling Parochial Church Council has been responsible for the coordination and collaboration between the parties involved in connection with the 2010 management plan with the assistance of the Deanery of Vejle, the Municipality of Vejle, and the National Museum of Denmark/Royal Jelling. The day-to-day care and maintenance in the previous period has been carried out without problems.

The revised management plan will deal with the entire expanded monument area and has been prepared in a collaboration among the Jelling Parochial Church Council, the Deanery of Vejle, the Municipality of Vejle, and the National Museum of Denmark.

As a consequence of new finds in the area around the existing World Heritage Site, it was decided in 2009 to implement a project to provide information about and present the entire monument area with palisade, remains of buildings, and stone setting. In this connection, a steering committee was established under the management of the Municipality of Vejle and with the participation of church authorities, the A.P. Møller Foundation, the Tourist and Development Council of Jelling, the Danish Agency for Culture, the National Museum of Denmark, and Vejle Museum.

At a meeting in the autumn of 2013 between representatives from the Danish Agency for Culture, the National Museum of Denmark, the Parochial Church Council, the Deanery of Vejle, and the Municipality of Vejle, it was decided that the group's work should formally continue under the name "The Cooperation Council" with the purpose of revising the management plan with respect to the Jelling area and implementing this plan. The members of this group are the Jelling Parochial Church Council, the Deanery of Vejle, the Municipality of Vejle, the National Museum of Denmark/Royal Jelling, and Vejle Museum. The chairperson for "The Cooperation Council" represents the Jelling area on the Steering Group for *Viking Age Sites in Northern Europe*.

## 1. The purpose of the management plan

The primary purpose of the management plan is to protect and preserve the Jelling Monuments with the universal values they represent.

Moreover, it outlines guidelines for its overall presentation to tourists and other visitors as well as the residents of the region and local area. Furthermore, The Cooperation Council of Jelling with its representation on the Steering Group for Viking Sites in Northern Europe is to promote familiarity with the entire serial nomination and the role of the Jelling Monuments therein.

The management plan is a tool for The Cooperation Council in the work to realize the purposes of the plan. The day-to-day care and maintenance will continue to be handled by the Jelling Parochial Church Council and the Municipality of Vejle.

In short, the administration of the world heritage values is divided into local, regional, and national hands with operational responsibility established through an already existing practice that is completely accepted by the parties involved.

Jelling, December 2013.

### **Church and Deanery:**

Gunni Højvang  
Chairperson Par. Church Council

Inger Kragh-Schwarz  
Jelling Par. Church Council

Leif Arffmann  
Dean, Vejle Deanery

### **Vejle Municipality:**

Henrik Aagaard  
Plan executive

Camilla Jørgensen  
Cityplanner

Ove Sørensen  
Museum head

Charlotta Lindblom  
Museum curator

### **National Museum:**

Hans Ole Mathiesen  
Unit leader

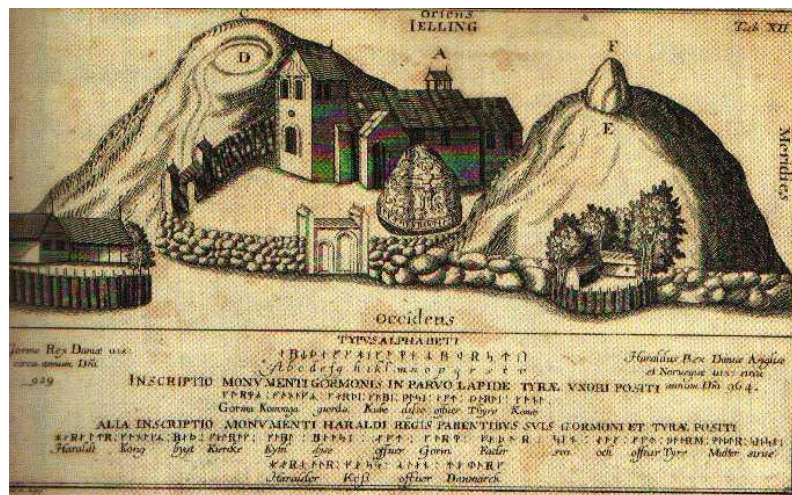


*North Mound, which contains the burial chamber*

## 2. INTRODUCTION AND BACKGROUND

When the Jelling monuments were added to UNESCO's World Heritage List in 1994, it was stated in the justification:

“The Jelling monuments consist of two burial mounds, two runic stones and a medieval church. The burial mounds and one of the runic stones are striking examples of pagan Nordic culture, while the other runic stone and the church illustrate the shift of religion in Denmark, and the overall monument thus marks the transition from paganism to Christianity in Denmark.”



The oldest picture of the Jelling mounds is from 1591. It was published in a book written by the vicegerent of Holstein Henrik Rantzau. The picture shows the old, tall church tower, which burned down and was never rebuilt.

Head of the Heritage Agency of Denmark Steen Hvass wrote the following justification in the application to UNESCO:

“For more than a thousand years, the monument in Jelling was created to show posterity:

That the country was gathered here into one realm.

The name Denmark appears for the first time here.

Christianity became the official religion of Denmark here.

Here, the king was presented – the ancestor of the current Danish royal house.

Here is the symbol of the foundation of the Danish nation.

Here, the change from a pagan society to a European, Christian civilisation is marked.

There is no other corresponding monument anywhere in the world”

The concept of World Heritage Sites was founded in UNESCO's World Heritage Convention from 1972, and UNESCO has advanced ten criteria for acceptance onto the World Heritage List. To be added, the proposed site must fulfil at least one of the criteria. The Jelling Monuments were approved on the basis of criterion number three:

“To bear a unique or at least exceptional testimony to a cultural tradition or to a civilization which is living or which has disappeared.”

ICOMOS wrote that “the Jelling monuments and especially the pagan burial mounds and the two runic stones are excellent examples of pagan Nordic culture.”

UNESCO’s overall criteria for acceptance onto the World Heritage List appear in appendix A.

Other Danish World Heritage Sites include Roskilde Cathedral and Kronborg Castle in Elsinore.

At the initiative of the Danish Agency for Culture, the Danish World Heritage Sites have participated in conferences, seminar series, etc., in which the sites have exchanged experiences with the administration of a World Heritage Site and provided mutual sparring on the exploitation of potential tourism and the preparation of management plans.

Once a year, a Nordic World Heritage Conference is arranged at one of the World Heritage Sites in the Nordic countries. Here, the World Heritage Sites may obtain relevant professional input and get inspiration for the administration and development of World Heritage Sites from other World Heritage Sites in the Nordic countries.



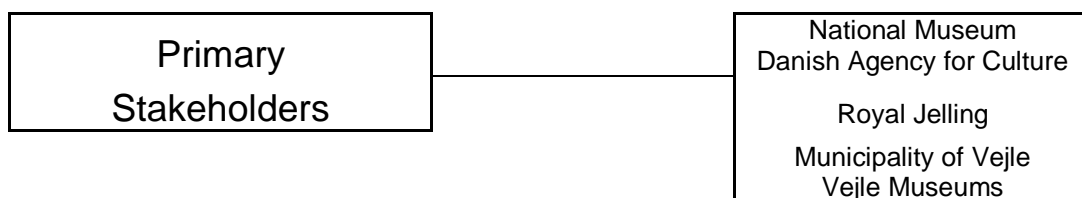
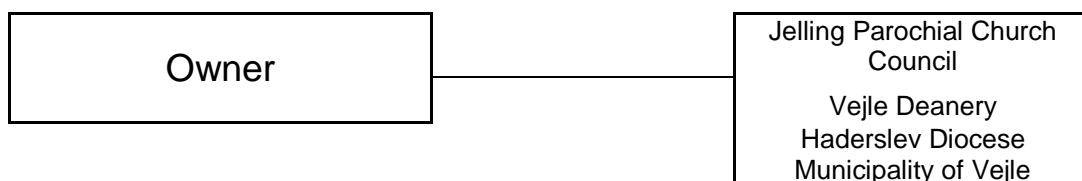
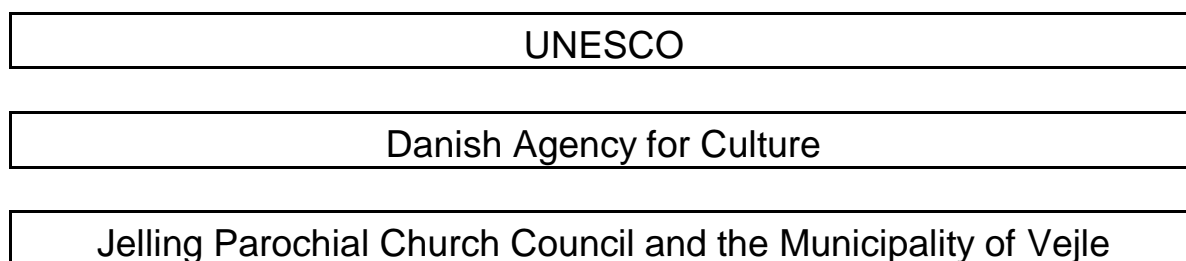
*Aerial photo of the Monument Area*



### 3. RESPONSIBILITY FOR THE WORLD HERITAGE SITE

The administration of the World Heritage Site takes place in collaboration with a number of parties. The Danish Agency for Culture has the overall responsibility for the World Heritage Site in relation to UNESCO and is in charge of contact with UNESCO.

The national responsibility for the administration of the World Heritage Area will be undertaken by the Parochial Church Council and the Municipality of Vejle. The administration of the area itself will occur in close dialogue with the Danish Agency for Culture, the National Museum of Denmark, and Church Authorities. Responsibility for the supervision of the World Heritage Area is placed with the Church Authorities in collaboration with the National Museum.





Other  
stakeholders

Researchers  
Region of Southern Denmark  
Vejle Tourist Association  
Visit Denmark  
UCL

Local  
stakeholders

Tourist organisations  
Local dealers  
Citizens of Jelling  
Byens Hus, Jelling  
Overnight facilities  
Camping places  
Local councils  
UNESCO Associated  
School



*View of Jelling Church*

## 4. NATIONAL LEGISLATION

### 4.1. Rules respecting the Jelling Monuments.

**Rules respecting burial mounds, runic stones, and traces of the palisade are covered by the Danish Museum Act (from 2006):**

The Burial Mounds and Runic Stones are protected by the Danish Museum Act, Consolidated Act no. 1505 of 14 December 2006.

### **Rules respecting the National Church of Denmark:**

Act on the administration and use of churches, etc., of the National Church of Denmark (Consolidated Act no. 796 of 24 June 2013)

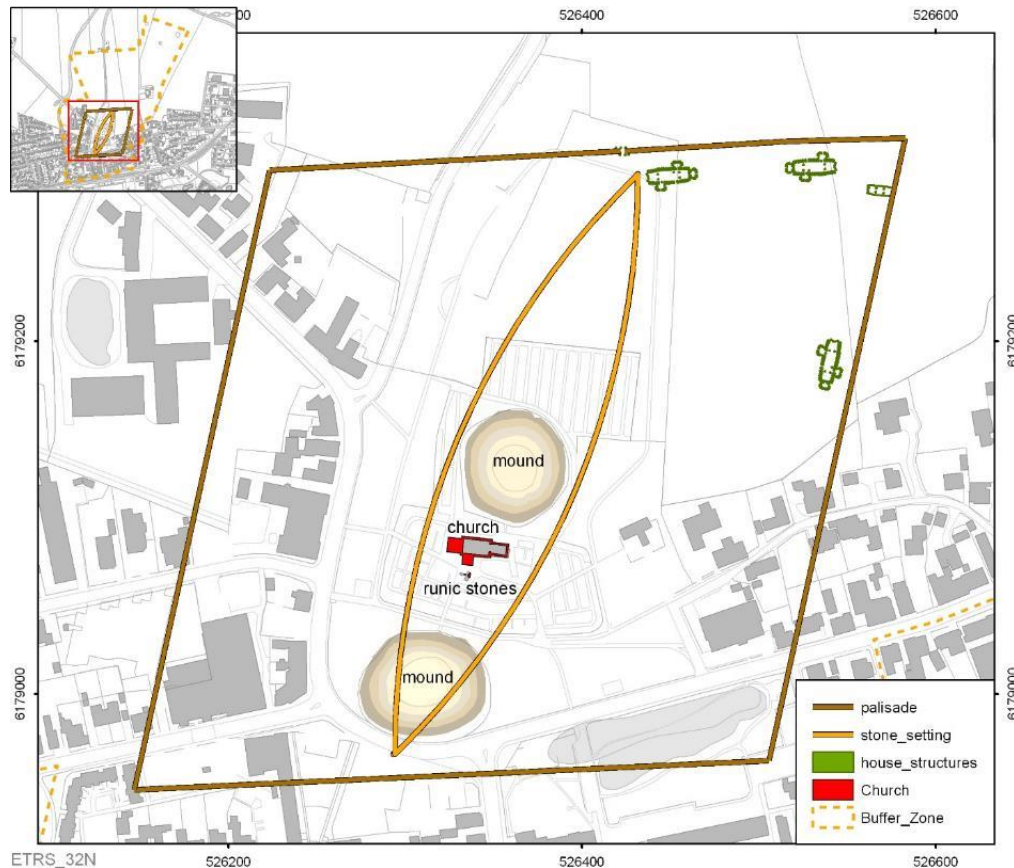
Act on the churches and churchyards of the National Church of Denmark (Consolidated Act no. 77 of 2 February 2009)

Ministerial order on churches and churchyards of the National Church of Denmark of 22 October 2007

### **General rules:**

Danish Nature Protection Act (Consolidated Act no. 870 of 14 June 2013)

Danish Planning Act (Consolidated Act no. 587 of 27 May 2013)



## **4.2. Municipal plan 2013-2025.**

The following provisions about Jelling appear in the 2013-25 Municipal Plan:

### **Framework and goals for Jelling:**

#### **Jelling's world heritage**

Jelling is known for the Jelling Monuments and the College of Education. It is estimated that more than 100,000 people annually visit the Jelling Monuments, which are on UNESCO's World Heritage List. With up to 25,000 guests, the Jelling Festival is also an event that draws visitors. The College of Education affects city life in many ways but not to as high a degree as before.

New finds from 2007 and after show that the entire area was encircled by an impressive palisade that encloses an area of 12 hectares. The Municipality of Vejle in close collaboration with the National Museum, the Danish Agency of Culture, Haderslev Diocese, and select experts has implemented an overall plan for the layout of the monument area in the future. The Municipality of Vejle would like to create a new overall presentation of the area with other stakeholders by adapting the landscape, exposing the burial mounds, removing existing buildings, laying out markers, etc. Therefore, the fundamental plan for the area has changed, and a project has been drawn up to show how the monument area can be presented at the site and how the area can be presented in context and elevate the experience of the entire Jelling Monument. The project has been in the process of realisation since 2012.

#### **Potential for development**

In an analysis of smaller cities in the region done by the Region of Southern Denmark, it was concluded that Jelling has a relatively clear role as a residential and commuter city. Jelling is viewed as attractive, which is reflected in the high housing prices, and has quite a high population growth and a high percentage of employment in the population. In the 5 years from 2006 to 2010, the city grew 10.3%. Jelling is especially attractive because of its nature and proximity to Vejle, and because of the College of Education.

Among Jelling's challenges is its commercial life, which is hard-pressed by the larger cities nearby. In relation to staple goods, the trade balance is 98. This means that the turnover in local stores corresponds to 98% of the expected consumption among Jelling's citizens. For shopping goods, on the other hand, the number is only 17, and that is materially lower than Give and Egtved, especially. Another challenge is the great vulnerability on the employment side, which is due to the fact that the College of Education is a dominant workplace. Today, the College of Education is a part of University College Lillebælt.

#### **Traffic conditions**

For many years, Gormsgade has created a barrier between the Jelling Monuments and the commercial centre of town. Therefore, a new bypass road has been established north of town. The road opened in 2012.

Trains run hourly, supplemented by buses. More frequent operations might encourage more people to use the train to commute and, thus, relieve the road network. An improvement of train operations must also be presumed to have a positive effect on the number of students at the College of Education.

#### **Nature and landscape**

Toward the south, the landscape is very hilly, and the terrain slopes down toward Fårup Lake and Grejs River. Toward the north, the landscape is flatter. Toward the southwest is

Fårup Moor. The golf course and Fårup Lake are recreational areas near the city that can be developed more with jogging paths, hiking routes, etc.

### **Town centre**

The centre of the town consists of an area around the station and the College of Education with the Exhibition Centre, which is located in a former dairy, and of new construction near Gorm Square and Superbrugsen. The College of Education constitutes an interesting environment worthy of preservation with very diverse buildings located in a park. Midtown provides an overall impression of a very green city but also a city that lacks a clear structure. An analysis of retail business indicates that the many tourists who visit the city are potential customers. The new archaeological finds and the work with the Monument Plan have created a new situation for Jelling Midtown. In this connection, the development of Jelling Midtown should be rethought. The City of Jelling is one of the most attractive and active towns in the Municipality of Vejle, and the Municipality of Vejle is trying to create a framework for a continued dynamic city development and a vibrant midtown area with the development plan.

### **Residential areas**

East of the town centre, Vejlevej has a more village-like character with a large village pond surrounded by old farms and houses. South of the pond runs Damvej/Nyvej with detached housing primarily from the 1960s. The relatively narrow street surrounded by lush gardens creates an elegant street space. West of the town centre is a large, older residential neighbourhood with many so-called "muremestervillas", detached brick houses. This is also where the former city hall, designed by Friis and Moltke, is located. The neighbourhoods south of the railroad are already larger than the part of the city north of the railroad. In order to preserve a balance around the city centre, a new residential area has been zoned around Herningvej, north of Anesminde. The city's location and other qualities mean that there will undoubtedly be a need for new areas. Density and urban renewal, for example, in the areas around the railroad may be a means for creating more residential housing near the station and the city centre and reduce the need to involve new areas in urban development.

### **Goals for Jelling**

- To exploit tourism opportunities from the UNESCO listing by creating a connection between the town and the monuments.
- To improve midtown and concentrate urban residences where it is possible while, at the same time, preserving the town's green character.
- To improve contact between the town and the landscape.
- To create better opportunities for bicycle traffic to Vejle.
- To preserve the village character of Vejlevej.

## **Guidelines for the Monument Area in Jelling**

### **Guidelines**

No facilities or buildings that will have a disruptive effect on the Monument Area in relation to its status as a World Heritage Site may be established within the buffer zone of the monument area (as shown on the attached map p. 14). With respect to buildings and facilities or the inclusion of areas for urban development within the buffer zone, consideration shall be paid to cultural-historic values, and it must be established in every single case that protection and preservation interests are ensured.

### **Summary**

The town of Jelling and the Monument Area constitute a totality. Jelling has a number of functions that can support the Monument Area with an exhibition building, a commercial

town centre providing services and parking, a station, and residential housing. The buffer zone includes the part of the town that has the closest interaction with the monument area and is naturally bounded by traversing streets. The buffer zone is an area in which any development and use has a relation to the monument area. For example, this may include building heights, materials, views, and vistas. A part of the buffer zone towards the north toward the open country shall retain a preserved vista.

#### **4.3. Local plans**

The following local plans are applicable within the Monument Area:

##### **Local plan no. 1150**

Purpose:

The local plan has themed objectives that apply parallel to existing local plans in the area. The themes in the local plan are to protect, secure, and present the world heritage on the basis of project proposals for the entire Monument Area. This will happen through a presentation of archaeological finds and new vegetation. The purpose of the local plan with themed objectives is to allow the town and the Monument Area to function together so that the plan does not change the potential uses of already built properties. For example, new buildings may be constructed and existing buildings may be added onto or modified. The principles in the plan are to show the course of the palisade, the building remains, and the stone setting, so they – together with the church, the burial mounds, and the runic stones – can present the unique history of Jelling. With the implementation of the plan, people will be able to experience the enormous expanse of the Monument Area and the fantastic finds in an architectural and artistic adaptation. Paths and easy access will be established for the public to the entire area.

Development:

The large undeveloped acreage in the local plan area is to continue to remain undeveloped, since the purpose of the plan is to provide structures and plant vegetation to protect, preserve, and present world heritage.

On properties with existing buildings, existing uses may continue, and new buildings may be constructed and existing structures may be added onto or modified. For any new constructions or structures that are directly visible from the Monument Area, an assessment must be made in every case whether an opinion must be solicited from other authorities.

##### **Local plan no. 1100**

Purpose

To provide the possibility of tearing down existing structures and to shift rural zone acreage to urban zones. The area can be used for parking facilities, recreational areas, paths, squares, presentation of the monument area.

##### **Local plan no. 135**

Purpose

Construction of Royal Jelling, exhibition centre.

Development

A 2½-floor building at a height of 12 meters with a plot ratio of 70 may be built.

##### **Local plan no. 1077**

Purpose

Establishment of parking places (near Superbrugsen), and adapting new buildings to the surroundings. The area may be used for residences, parking, and shops.

Development

Buildings with a height of 12.5 meters with a plot ratio of 110 may be built.



### Local plan no. 102

#### Purpose

Development of the centre area. The area may be used for residential purposes, businesses and shops as well as parking, paths, and open spaces.

#### Development

Buildings with a height of 8.5 meters with a plot ratio of 100 may be built.

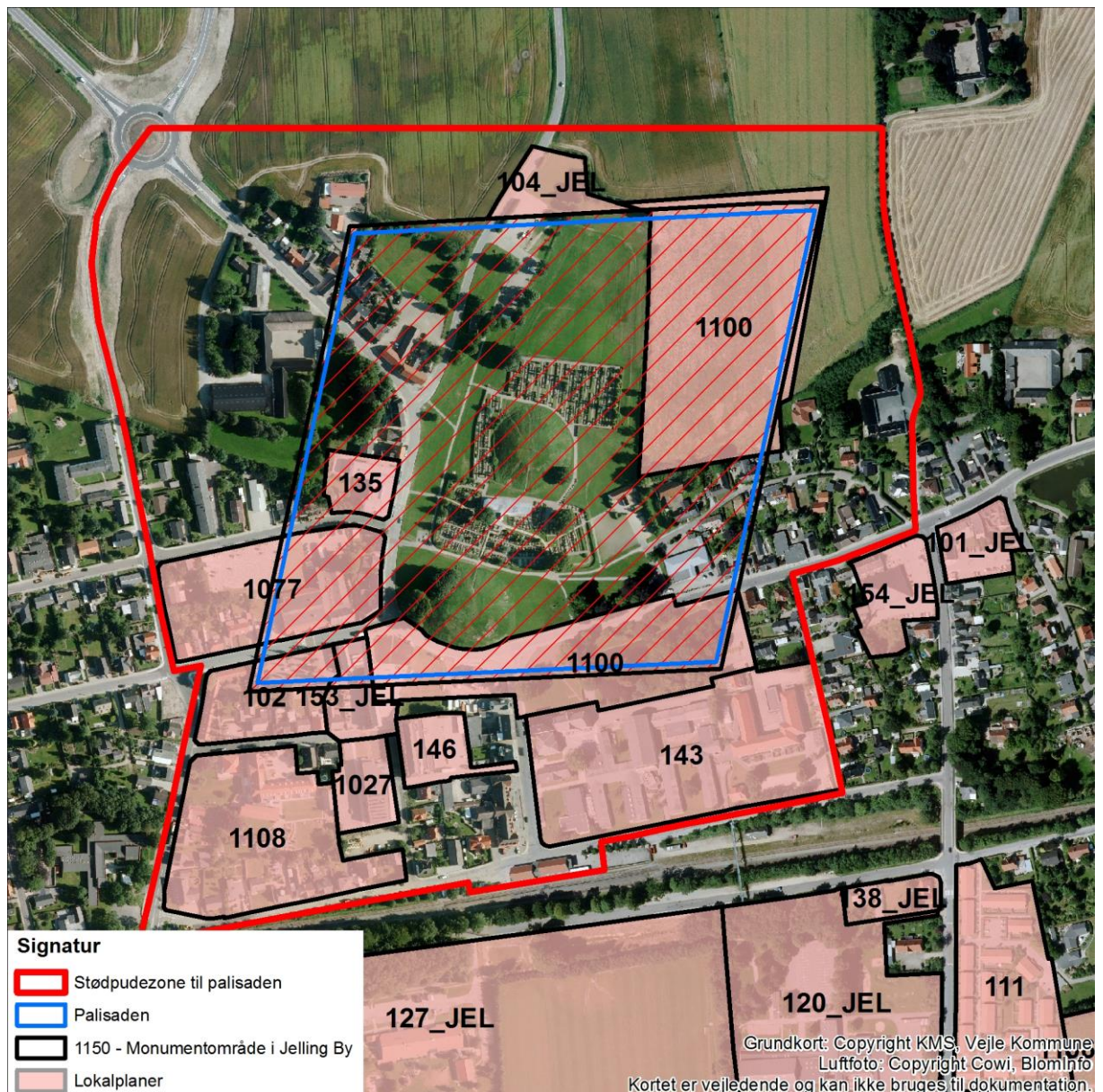
### Local plan no. 153

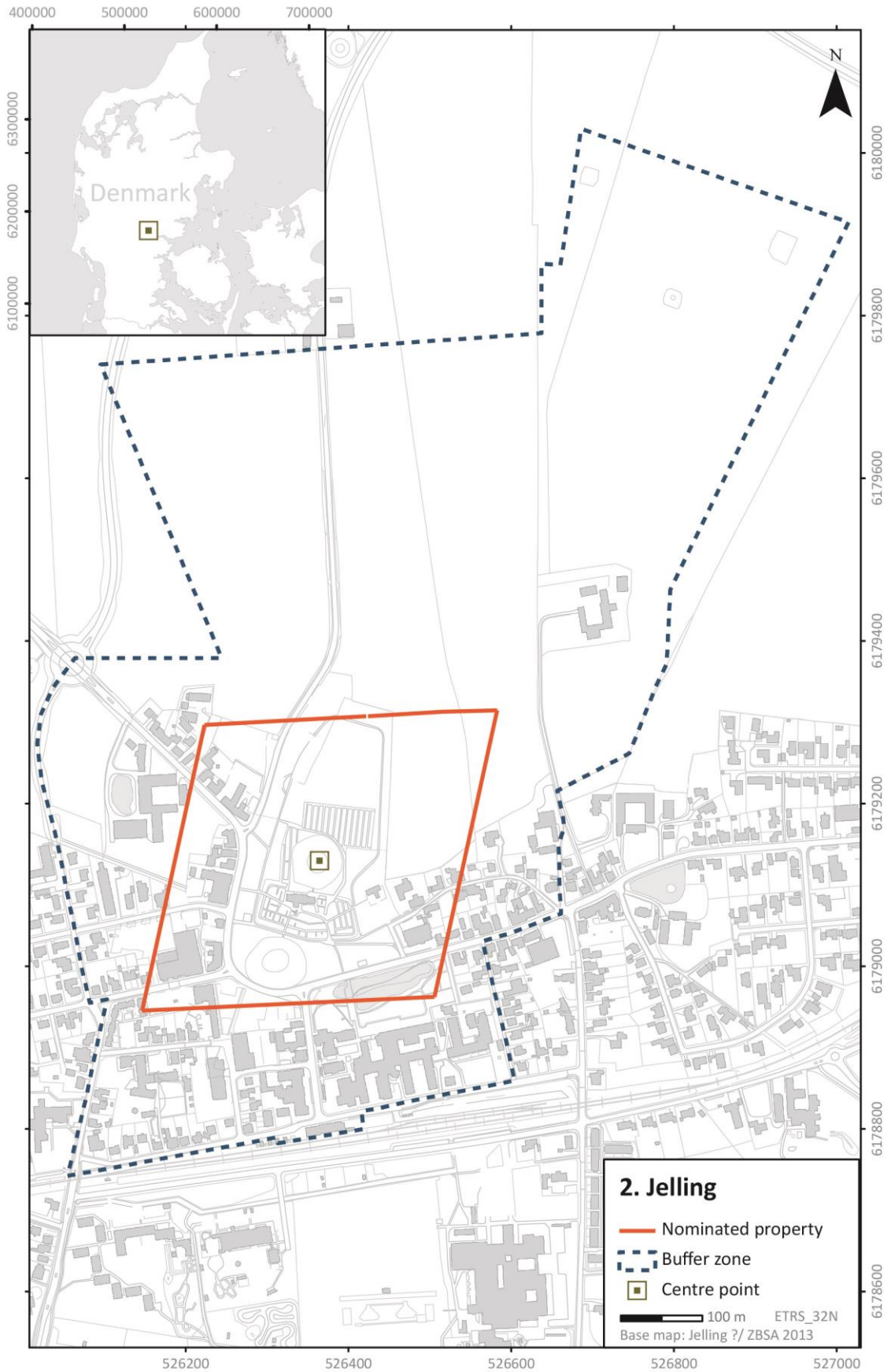
#### Purpose

Establishment of a new square, residences, and businesses. The area can be used for squares, roads, parking, residences, businesses, and shops.

#### Development

Buildings with a height of approx. 11 meters with a plot ratio of 70 may be built.







## 5. VALUES – Identification of vision, values, and plans for the Monument Area

This section is introduced with a schematic overview of the site's various values and objectives. Then, the overview will be supplemented with a vision for the World Heritage Site; the values will be elaborated, and central themes of the Municipality of Vejle's comprehensive plan for the monument area presented.

As mentioned before, the Jelling Monuments were approved as a World Heritage Site on the basis of criterion number three of the World Heritage Convention: "to bear a unique or at least exceptional testimony to a cultural tradition or to a civilization which is living or which has disappeared".

In an extension thereof, the following values and objectives of the monument area have been identified:

Value	Form	Are these values crucial for acceptance on the World Heritage List	Objective
Cultural values	Two runic stones	Yes	To preserve and protect the stones as testimony of the transition from paganism to Christianity in Denmark and as evidence that Denmark was unified into a realm.
	Two burial mounds and churchyard	Yes	To protect and preserve the burial mounds as an example of pagan Nordic culture.  The area around Jelling Church has functioned over 1000 years as a burial place. The goal is to preserve and develop the churchyard as evidence of a burial culture in the past, present, and future for the benefit of the parish inhabitants.

	<p>The church with three ancient wood buildings beneath the present church.</p>	<p>Yes</p>	<p>To develop the church so it can continue to act as a vibrant church for the parish inhabitants and as a clear cultural marker for the residents of Jelling and tourists to the area.</p>
	<p>Traces of a larger stone setting and traces of a larger palisade and three buildings of the Trelleborg type</p>	<p>Yes</p>	<p>The ancient wood buildings are indicated by traces in the ground and, thus, are not visible in their original form.</p> <p>The objective for traces of the stone setting is: to preserve and protect the preserved portions of the stone setting as a symbol of power and an example of the oldest part of the pagan component of the monument area.</p> <p>The objective for traces of the palisade with affiliated buildings of the Trelleborg type: To preserve and protect the parts of the palisade and buildings found in the ground. The components in the Jelling complex quite clearly show planning at a very high level. The wooden chamber in the North Mound forms the centre of the complex. This is the centre of the mound and, at the same time, the centre of the large stone setting, which lies on the intersection of the palisade's diagonals. The centre of the South Mound, marked by a post, is located on the longitudi-</p>

			nal axis of the stone setting. The same is true of the large runic stone.
<b>Economic values</b>	Tourist attraction for the town of Jelling, the Municipality of Vejle, and the region	No	To increase familiarity with the World Heritage Site and to develop the World Heritage Site as a tourist attraction (see below)
<b>Research values</b>	Archaeology and history National Museum and Vejle Museums	Yes	To create the prerequisites for interpreting the past, understanding the present, and actively being part of creating the future (see below)
<b>Educational and informational values</b>	Visitor centre and national knowledge centre for the dissemination of history and cultural heritage	No	To increase familiarity with world heritage and the World Heritage Site  To promote a deeper, educational perspective on the World Heritage Site (see below)
<b>Social values</b>	Parish church  Recreational area and framework for cultural activities	No	To be a church for everyone who lives in or has an affiliation with the parish.  To ensure that the inhabitants of Jelling and the Municipality of Vejle have an understanding of the World Heritage Site and its unique value  To provide the local population pride, interest, and respect for the World Heritage Site.

## 5.1 Vision

The World Heritage Convention deals with the preservation of cultural heritage – cultural heritage that can help provide an understanding of the times in which we live, so that we as individual human beings may formulate expectations for the future we are part of shaping. World heritage is not just to be presented but must be a part of challenging our considerations of what values and modes

of behaviour are to form the society and community of tomorrow. Interpretation of the past, understanding of the present, and expectations for the future must go hand in hand, so the cultural heritage of the past can help create the cultural heritage of the future.

At the local level, thus, it will be important to create a connection between the Jelling Monuments and the everyday life that is lived in Jelling as well as the cultural opportunities that already exist in the Municipality of Vejle in general and in Jelling in particular and which shall continue to be developed. The music festival, Spotlight, Music on the Mounds, the civic centre 'Byens Hus', the Viking market, initiatives and events by the Parochial Church Council, and the Asta Festival are examples of this.

At the national level, it is important to continue the collaboration between the National Museum, the Danish Agency for Culture, the Municipality of Vejle, the Jelling Parochial Church Council, and other church authorities.

Therefore, the management plan must express an objective about:

1. Cooperation
2. Balance between everyday life and tourism
3. Effective and lively communication
4. Focus on quality and authenticity
5. Preservation and protection

The administration of the Jelling Monuments must ensure a presentation:

- With great professional depth that can provide knowledge about the World Heritage Site,
- With an opportunity for emotional engagement that can provide understanding, interest, and respect for the World Heritage Site.
- That animates creative enterprise, so the knowledge and understanding acquired is used in the creation of tomorrow's cultural heritage.

## **5.2. Values**

### **5.2.1 Economic values**

A strategic plan for the Jelling monuments with respect to world heritage, tourism, and cultural activities is being developed and prepared. This strategic plan is to flow into the overall strategy for the area, which contains proposals for the development, planning, coordination, and realisation of various arrangements and events with a relation to the World Heritage Area.

### **5.2.2 Research values**

In the area of research, a special Jelling project has been launched that runs until 2014, supported financially by the Bikuben Foundation. A part of the project has been the uncovering of the north end of an approx. 350-meter-long stone setting with the North Mound at the centre and a palisade that surrounds an area of approx. 12 hectares around the monuments.

The Jelling project takes its starting point in the 3 themes outlined below:

#### **Transition from paganism to Christianity**

The springboard is the Jelling Monuments and their unique character. The Monuments are an obvious starting point for a study of the transformation of Danish society during Viking times and the early Middle Ages under a strong influence from the outside – particularly, from its neighbours south of the border.

#### **Nordic and European perspective**

Contact with the South brought into the country not only the worldview of the Christian Church but also new social and political structures. Denmark was not isolated in Viking times. Nor does the project aim solely at Jelling or Denmark but involves points of view and perspectives from the rest of the Nordic countries and Europe. The goal is to explore the preconditions for the development we can find here in Denmark and elsewhere in Europe, where Christianity won a foothold at more or less the same time. The German-Roman and Byzantine empires played an important role in this process. Any attempt to understand the Jelling Monuments and their times must necessarily look closely at these areas as well.

#### **World heritage**

The acceptance of the Jelling Monuments onto the World Heritage List is an expression of the monuments' central significance not only from a Danish perspective but on the world plane as one of the most important of all the monuments from Viking times. Scientific interest in the monuments can be traced back to the end of the 1500s. Nevertheless, as archaeological investigations from recent years have shown, surprising new things can still be added to the knowledge we have about the site and the events that took place here.

In 2010, the following studies have been done in and around the Jelling Monuments:

1) Excavations at Gorm Square: Approx. 35 m of a stretch of the South Palisade has been exposed. The study has given the first detailed information about the construction of the palisade and identified the southern course. The palisade was built with upright planks up to 30x15 cm in size. The planks have been excavated up to 1.25 m under the ground, which indicates a palisade height above the ground of at least 3 m. Large posts, 20-25 cm in diameter, have lined external and internal sides at regular intervals. They probably held horizontal lumber that attached the planks. They may have also supported a raised walking surface on the upper part of the palisade.

2) Excavations of the NE quadrant in the demarcation of the palisade: in terms of area, the study is clearly the largest yet carried out in Jelling. To this point, an area of 10,000 m<sup>2</sup> has been excavated, including the north-eastern part of the palisade and the area within. The excavation has exposed traces of three large longhouses of the so-called Trelleborg type located at fixed distances in

relation to each other and the palisade. The only parallels for a special form of extension to the entrances are found at Harald's ring castles at Fyrkat and Trelleborg. In addition to the Trelleborg longhouses, traces have found to this point been of four other buildings – three of them of a later type than the Trelleborg houses. The excavations continue to November 2010. A total of 18,000 m<sup>2</sup> is planned to be investigated.



*Excavation of the palisade.*

3) Excavations at the Marketplace near Jelling Inn. The excavation successfully found the north-west corner of the palisade. This makes it possible to establish the geometry of the structure as a whole and to form a basis of comparison with the already known northeast corner.

4) Excavations on Thyrasvej: A smaller trial investigation between Thyrasvej and Vejlevej 7, which was able to find a small part of the large palisade and, thus, establish the eastern course more precisely.

5) Investigation of the Southeast Corner. The corner itself has not been found, but the fence has been traced so close to the corner that its placement must be said to be certain. We can also ascertain that most of "Smededammen" [the "Smith Pond"] is outside the palisade wall.

6) Digitalisation and re-interpretation of older excavations at Jelling Church. A project has begun to digitalise the very comprehensive data materials from previous excavations at Jelling Church by Ejnar Dyggve and Knud J. Krogh. The results of the excavation have been re-interpreted in the light of new knowledge about buildings from Viking times that has been established after the excavations. This assessment indicates that more buildings are hidden beneath the church than earlier assumed and, at any rate, one of them appears to have been a ceremonial hall – i.e., a building that has its nearest architectural parallels in eastern Danish and Scandinavian aristocratic environments.

7) Laboratory analysis and final processing on the 2009 excavations at Jelling North, Thyras Have [“Thyra’s Garden”], Smededammen.

8) Excavation at Smededammen and inclusion of preserved planks and posts from the southern stretch of the palisade.

As a part of the implementation of the Municipality of Vejle’s comprehensive plan in 2012, the Vejle Museums found preserved wood in the drained Smededam. The wood was C-14 dated to derive from Viking times<sup>1</sup>. From the good preservation conditions in Smededammen, it could reasonably be assumed that a longer stretch of the palisade was preserved here. Therefore, it was decided to preserve the palisade, albeit with the exception of the approx. four-metre-long stretch where a part of the wood has already been exposed to oxygen. In May 2013, this part of the palisade was investigated in a research excavation as a collaboration between the Vejle Museums, Århus University, and the National Museum (the Jelling Project).

It appeared that there was a very well-preserved section of the palisade and that the palisade was not erected in a wetland but in a dug-out trench, just like the other places in the palisade. The planks found could also confirm earlier observations of the dimensions of the planks, since they measured between 10-15 x 30-35 cm in width. The support posts were approx. 22 cm in diameter and round. A dendrochronological investigation of the wood could show that the palisade was erected around AD 970<sup>2</sup>.

---

<sup>1</sup> Beta-337621-337624. Beta Analytic Inc. 2012.

<sup>2</sup> Bonde 2013: NNU Report 38-2013.



### **5.2.3 Educational and informational values**

The part of the presentation that has to do with overall information about the monuments emanates from Royal Jelling. Through guided tours, events, and lectures, Royal Jelling tries to communicate to a broad audience, and a common feature is that this communication as a starting point is free of charge. However, guided tours from Royal Jelling may be hired at applicable rates.

From the summer of 2015, Royal Jelling will be presented within a whole new framework with major exhibition themes about Viking times, the shift in religion, and Harald Bluetooth and his times - in Jelling in particular and the rest of the country in general. This presentation is connected with and extended to the entire Monument Area and the sites for archaeological excavations to the extent they can contribute to a better understanding.

From 1 January 2014, a knowledge centre for the dissemination of history and cultural heritage for teacher and pedagogical education programmes in Jelling will see the light of day. UCL-Lillebælt, the Municipality of Vejle, and the Region of Southern Denmark together with local entities, including the museums in the Municipality of Vejle and the National Museum/Royal Jelling, will work with presenting history and cultural heritage for an interim four-year period, and a fruitful synergy is expected between the World Heritage Site, local actors, and the knowledge centre.

### **5.2.4 Social values**

Taking their starting point in the church and churchyard, the Jelling Monuments are the centre of the parish's ecclesiastical life.

The Jelling Parochial Church Council has an objective of being a church for everyone who lives in or has an affiliation with the parish. We work with respect for differences and traditions. We are a church and stand together around our faith, Christian culture, and tradition, and we want to be a church in time and for the times.

Jelling Church is a part of the Jelling monuments, which were put on UNESCO's World Heritage List.

There must, first and foremost, be room for the parish church, but we also want to make room for and welcome tourists, which can be done by having an open church. The many visiting tourists require extra resources for cleaning, lighting and heating, and extra maintenance around the church and the mounds.

Jelling Parish has approx. 4200 inhabitants and, therefore, is a parish with many worship services and religious ceremonies such as baptisms, marriages, and funerals. Worship services are well attended, and they include morning services, children's services, baby psalms, etc. Personnel and the Parochial Church Council hold regular cultural events in church – primarily, with music as content. Other ecclesiastical cultural events are often held in the nearby parish centre.

The monument area already functions as a recreational area for children, young people, and adult residents of Jelling, and the area's system of paths functions as a link between the eastern and western parts of Jelling.

Various events are held in the area (Spotlight Festival, Viking Market, Opera on the Mounds, Summer Picnic, etc.) over the course of the year, and the area is often involved in teaching at Bredager School (the local grade school).

The new layout with marked palisade, stone setting, and Viking buildings, and a system of paths that makes possible some quite nice tour possibilities will encourage new cultural activities in the coming years, and the area around the church and churchyard will be made even more attractive in presentation contexts.

The use of the area takes place with great respect for world heritage in connection with its daily use and various events. The daily use of the area helps ensure to a high degree that the inhabitants of Jelling have an understanding of the World Heritage Site and its unique value, and it helps give the local population pride about, interest in, and respect for the World Heritage Site. A project in collaboration with the Danish Agency for Culture around sustainable tourism will presumably reach out to the citizens of Jelling in a new and more binding way in coming years: To help make all actors in the nearby area into proud ambassadors for Jelling and its cultural-historical values.

### **5.3 Strategic plan for the Jelling Monuments**

An overall strategic plan for the Jelling Monuments was prepared in 2009. The strategic plan contains an overall, coordinated effort around the Jelling Monuments and specifies 7 focus areas:

1. New layout of the Monument Area, 2. New international research into the history of the Jelling Monuments, 3. New, sensitive presentation of the Jelling stones, 4. New city plan for Jelling, 5. Traffic plan and retail business structure must be reconceived, 6 Visitor's centre and cultural tourism, 7. Communication and learning.

### **5.4 Comprehensive plan for the Monument Area in Jelling**

As a part of the implementation of the strategic plan for the Jelling Monuments, a comprehensive plan for the monument area was prepared that creates openness, air, and a format for the Cultural Heritage Site by liberating the space of the landscape and diverting traffic. With support from the Danish state and the A.P. Møller and Wife Chastine McKinney Møller's Foundation for General Purposes, a project proposal for the monument area in Jelling was subsequently put together. The project proposal was approved by the Vejle City Council in 2012. The project proposal was prepared by the Kristine Jensen Architect Studio in collaboration with artist Ingvar Cronhammar. The project includes a simple landscaping of the area and a presentation concept that displays the fantastic finds in a new, major, and comprehensive narrative.

During 2012 and 2013, work was done to realise the project and the visions of the Comprehensive Plan and, on 10 September 2013, the first stage was dedicated by Her Majesty Queen Margrethe II.

#### **Primary components of the Comprehensive Plan for the Monument Area:**

- The extent and geometry of the palisade was marked with concrete tile edging that functions as a path and marks the size of the palisade. 276 of the total 384 palisade posts have been erected. The posts are executed in a special concrete and placed at varied distances.
- The stone setting is indicated on the ground as concrete slabs. Individual concrete disks are erected on a slightly inclined surface that tells about the specific finds of overturned stone.

- The large houses of Trelleborg type are shown as horizontal concrete surfaces where the halls are drawn 1:1 as finds and ground plans on concrete fields.
- The landscape space within the palisade is partially finished and will come to appear with a mixture of different grasses. The field is to stand as a unit, a green field that binds the inner palisade space with the church and the Jelling burial mounds.
- The field will be established through slow care over the next 5 years. The field, when it is finished, will appear as a grass-thyme steppe that forms a unified green surface within the palisade.
- In the more urban parts of the Monument Area, a new pavement will be laid.



*The Monument Area as conceived in the Comprehensive Plan.*

## 6. THREATS TO THE AREA'S VALUES

In this context, a threat is deemed to be a major problem that has already had or is expected to be able to have consequences for the World Heritage Site. In the schema below, the most important threats to the cultural values of the World Heritage Site are identified. In the management plan, there is a special focus on cultural values, since they constitute the core of the World Heritage Site and are the basis for the addition of the Jelling Monuments to UNESCO's World Heritage List. The threats are related to necessary administrative measures.

The purpose of the following scheme is to create an overview of the threats that are assessed to be the most important at the present time (December 2013).

-

Cause and threat	What values require protection?	What administrative measures are necessary?
<p>Cause:</p> <p>Runic Stones' age</p> <p>Both stones are more than 1000 years old.</p> <p>Affected by:</p> <p>Heat/cold</p> <p>Rain / snow</p> <p>Frost</p> <p>Algae</p> <p>Air pollution</p> <p>Threats:</p> <p>Decay of Runic Stones</p> <p>Danger of frost erosion</p> <p>Graffiti</p> <p>Vandalism</p> <p>Children playing on the Runic Stones</p>	<p>Securing the Runic Stones for later generations.</p> <p>To make sure that the Runic Stones will remain standing in their place by the church.</p> <p>To minimise deterioration and the risk of frost erosion, two glass cases have been erected to protect the Runic Stones.</p>	<p>A thorough study of the Runic Stones was undertaken in 2008/2009, and the subsequent report ascertained that the condition of preservation was not good and that protection of the Runic Stones was necessary.</p> <p>In 2009, the Danish Agency for Culture in collaboration with the National Museum, the Deanery of Vejle, the Jelling Parochial Church Council, and the Municipality of Vejle called a competition for proposals to protect the two Runic Stones from the climate.</p> <p>157 proposals were received from which a committee of judges selected a proposal from Erik Nobel Architects, Copenhagen.</p> <p>The winning project was realised in 2010 and 2011 in collaboration with the architect, the Danish Agency of Culture, the National Museum, and the Jelling Parochial Church Council. The 2 glass cases, executed in glass and bronze, were dedicated by the Danish Minister for Culture in December 2011.</p> <p>A technical system controls the humidity</p>

<p>Traces of the palisade in the ground.</p>	<p>Remains of the palisade posts in Smededammen are secured against desiccation.</p>	<p>and the heat in the cases.</p> <p>Daily logs are kept, which are reported to the National Museum and the Danish Agency for Culture.</p> <p>The Runic Stones' condition of preservation is monitored by the National Museum through several annual inspections.</p> <p>The water level of Smededammen is controlled and secured by the Municipality of Vejle.</p>
--	--	---



Architect Erik Nobel's proposal for glass and bronze showcases for the two runic stones

<p>Vegetation is changed</p> <p>.Wear and tear</p>	<p>The burial mounds are covered by green vegetation.</p>	<p>At the moment, tourism and ord. use of the mounds are not a problem, but increased tourism may become a problem.</p> <p>The condition of the mounds will be examined at the annual church inspection, which is undertaken by the Parochial Church Council and, every fourth year,</p>
--	---	--

		<p>by the Deanery of Vejle.</p> <p>The mound area is under daily supervision by church personnel.</p> <p>Wear and tear on the mounds will be closely monitored.</p> <p>The South Mound in particular has been attacked by click beetle larvae.</p> <p>The larvae cannot be suppressed. Therefore, bare spots are re-sown with grass.</p> <p>In connection with the implementation of the comprehensive plan for the Monument Area, Gormsgade, south of the mound, is closed.</p>
--	--	--

<p>The church.</p> <p>The church is open to visitors all year round from 08:00 to 17:00 or 20:00, depending on the time of year. However, the church is closed in connection with religious ceremonies</p> <p>The church is visited by many tourists - estimated in 2013 as approx. 125,000.</p> <p>Threat:</p> <p>Many visitors</p> <p>Theft</p> <p>Vandalism</p> <p>Graffiti</p> <p>Fire</p> <p>Breakdown of heating system (water)</p>	<p>The church is a medieval church built in approx. 1100.</p> <p>King Gorm's burial chamber is marked in the church floor</p> <p>It was decorated in the year 2000 by artist Jørn Larsen. The decoration was donated by the Year-2000 Foundation.</p> <p>Baptismal font, candle holders, etc., are standing out in the church.</p>	<p>At the moment, the church is visited by approx. 125,000 tourists a year.</p> <p>An increased influx of tourists might cause problems in relation to the church's function as a parish church. Particularly at funerals and burial services, there is a need for stillness around the church.</p> <p>In the long term, it may be necessary to post more church personnel at the entrance to ensure the necessary respect surrounding religious ceremonies.</p> <p>The church's inventory is freely accessible, but there have only been a very few instances of thievery. We have very few incidents of vandalism and only to a very limited extent. We do not estimate that increased supervision is necessary.</p> <p>The church meets public requirements for fire safety. There is fire extinguishing equipment in the church and, at larger events, there are fire guards. It is</p>
---	--	---

		<p>being considered whether to install an automatic fire alarm system in the church.</p> <p>Breakdowns of the heating and water system are secured against with a new system that is supposed to prevent any discharge into the church. The system is further equipped with an alarm system.</p> <p>The church is under daily supervision by church personnel.</p>
--	--	--

<p>Cause:</p> <p>The churchyard.</p> <p>The churchyard is located around the Jelling monuments.</p> <p>Toward the south, the churchyard consists of a classic, old churchyard with a newer section from the 1990s.</p> <p>West of the North Mound, there are approx. 200 grave sites in a classic, older churchyard grounds. This part of the churchyard will be closed in the long term.</p> <p>The northern part of the churchyard is of a more recent date - around 100 years old.</p> <p>There are many listed sepulchral monuments at the churchyard.</p>	<p>A part of the acceptance criteria onto the World Heritage List was that it is unique that the site continues to be used and that the church is a parish church and the churchyard continues to be used for burials.</p> <p>The oldest part of the churchyard is to be preserved with the churchyard culture for which it is an expression.</p> <p>The intent is to expand and reorganise the newer part with respect for the historical elements, so the greatest possible connection between the churchyard and the monument area is achieved.</p>	<p>The Jelling Parochial Church Council has drawn up a development plan for the churchyard.</p> <p>The development plan takes a position on preservation, reorganisation, and new facilities.</p> <p>The objective is to preserve the southern churchyard in the traditional classic style.</p> <p>In the long run, the churchyard toward the west will be closed. No new grave sites will be established, although relatives may continue to use existing grave sites.</p> <p>In connection with the implementation of the "Comprehensive Plan for the Monument Area", a stone dike will be established east, west, and north of the northern churchyard.</p> <p>It has been determined that the Northern Churchyard will be laid out with ground-covering plants and angled grave stones and without proper hedges and tall trees.</p>
--	--	--



<p>Threat:</p> <p>Jelling Parish's need for grave sites will be increasing since the number of parish inhabitants is increasing.</p> <p>In 2013, the number of inhabitants was approx. 4,200.</p> <p>Wear and tear on the churchyard</p> <p>Vandalism of the monuments and grounds</p>		<p>This part of the churchyard will be able to be united in mutual respect for the World Heritage Site's various functions.</p> <p>The churchyard is under the daily supervision of church personnel</p>
--	--	--

An overriding threat to the World Heritage Site's other value areas and plans (cf. section 5) is a lack of economic resources. A closer examination of the economic prerequisites for the administration of the World Heritage Site may be found in section 8.



*Excavation of the North Mound in 2010*

## 7. ADMINISTRATIVE MEASURES

A number of activities take place within the World Heritage Site. These activities may be connected with an increased pressure and, thus, be a threat to the values in the area. Therefore, it is necessary for these activities to be regulated through administrative measures. Human activities within the World Heritage Site are distributed into the following categories:

### 7.1 Worship services, religious ceremonies, and other activities

Jelling Church continues to be used as a parish church in Jelling Parish.

There is a morning service every Sunday. There are also approx. 30 weddings, 60 burials/funerals, church concerts, lectures, and other activities. The church activity level has been rising in Jelling Parish in recent years, and a continued development of church life may be predicted.

The Parochial Church Council must ensure that the parish church is available for all religious ceremonies and, at the same time, ensure that church personnel are able to do their work, that the personnel can make preparations, including practice for the organist on the church organ, and that the church is kept clean.

In the churchyard, relatives left behind must have the opportunity to visit grave sites in peace. The Parochial Church Council would like understanding for this prioritisation.

Church services and various activities are published and announced in the daily press, on the church's homepage, and in the parish bulletin. Religious ceremonies are announced to the extent relatives wish it. A clear sign with information about ongoing religious ceremonies will be established primarily as information for tourists.



*Stained glass window in Jelling Church*

## 7.2

### **Tourists**

The Monument Area is visited by approx. 125,000 people annually (1994 study). Almost 35,000 guests have beaten a path to Royal Jelling (2013). There are almost 500 guided tours for groups, and approx. 50 groups of various sizes order tours of the church. The construction of a visitors' centre in connection with Royal Jelling is expected to attract even more visitors.

In the churchyard and the church, a certain regulation of the comings and goings of tourists may be necessary. This may be done, *inter alia*, by increasing the number of signs and, possibly, with the help of personnel during the peak season. In the rest of the monument area, the increased exposure will make it possible for the area to contain more tourists.

Both the information centre and the church have very informative homepages and provide materials that are sold in the centre's shop and in the church porch.

From 2015, Royal Jelling will have an increased focus on guests, who will continue to have entry free of charge, and a centre with extended opening times, including packages for business tourism, flexible cafe facilities, and a shop with a national format.

## 7.3

### **Recreational and cultural activities**

The Monument Area and the area immediately south, west, and north of the monument area will be used for a number of major cultural events such as, for example, the Viking Market, Opera on the Mounds, and Spotlight – a cultural festival for children and young people. The area will also be used for recreational purposes such as strolling, dog-walking, games, relaxation, etc.

As the Municipality of Vejle's comprehensive plan prescribes, the Monument Area now includes the city square, the present stretch of road with Gormsgade, and the fields northeast of the church. Thus, there is an opportunity for the area to be developed as a framework for cultural activities and a recreational area, and new initiatives may be taken. The city square is already used for a number of events, and the square is thus a part of creating new life in the area – especially south of the churchyard and around the South Mound. The extent of the activities and events today do not constitute a threat to the Monument Area. To the contrary, they help provide a sense of ownership to the local population and to make the Monument Area attractive to visitors.

In connection with an annual review and possible revision of the management plan, it will be necessary to take a position on whether the use of the area should be regulated in order not to burden the Monument Area or whether new initiatives should be taken to maintain a living World Heritage Site.

## **8. ECONOMIC RESOURCES AND IMPLEMENTATION**

An important consideration in connection with the administration of the Jelling Monuments is how the various parts of the management plan can be realistically implemented within the given framework of resources. In connection with the present management plan, there are a number of human and economic resources that are expected to be available for future work.

### **8.1 Finances**

According to UNESCO, the protection of World Heritage Sites rests with the international community, but in practice only developing countries can get direct financial aid for preservation. Therefore, funds from church authorities, the Municipality of Vejle, the Danish Agency for Culture in Denmark and diverse foundations form the economic framework for future administration, including preservation and optimisation of the area's values.

The Jelling Monuments have benefited from great public attention and various foundations that have made it possible to implement important parts of the management plan. Thus, the Velux Foundation and the Year 2000 Foundation have supported the construction of Royal Jelling and the restoration of the church in 2000; Bikuben, the Labour Market Holiday Fund, and the Augustinus Foundation have supported research on the monuments, and the A.P. Møller Foundation, the state, and the municipality have supported the implementation of the comprehensive plan.

Operational and maintenance expenses for the Monument Area outside the church and churchyard are defrayed by the Municipality of Vejle, which has drawn up an operational and maintenance plan – albeit, excepting the church parking lot and the South Mound, which belong to the Church.

The Municipality of Vejle and the National Museum jointly ensure the operational basis for the visitors' centre "Royal Jelling".

Expenses for the maintenance of Jelling Church and Jelling Churchyard are defrayed by Jelling Church Funds.

Money is paid into the church funds from grave site maintenance fees and other services at the churchyard and the church.

Moreover, a church tax assessment, fixed by a committee of the Deanery of Vejle and financed by church taxes from members of the National Church of Denmark in the Municipality of Vejle, will be paid into the church funds. This amount contains an operations target and a grounds target. The deanery committee fixes these targets and reports to the Parochial Church Council in the month of September the amount to be budgeted in the coming year. The Parochial Church Council itself disposes of the operations funds, while the grounds funding can only be used for purposes the deanery committee has approved.

The rules hereon take their starting point in the Act on Financial Affairs of the National Church of Denmark, Consolidated Act no. 753 of 25 June 2013.

No special budget is earmarked for the maintenance and operations of the World Heritage Site. The Parochial Church Council has previously received a small sum from the County of Vejle and, after the discontinuance of the county, from the Danish Ministry of Culture via the Municipality of Vejle. This ceased in 2010, as the Municipality of Vejle will receive a block grant for cultural agreements from here on out, but specific funds have not been granted for the Jelling Monuments. At the moment, a sum of DKK 170,000 has been incorporated in the assessment by the Deanery of Vejle as a consequence of World Heritage.

## **8.2 Implementation plan**

Over the next few years, the administration of the Monument Area in Jelling will be characterised by consolidation. The large projects that are being implemented at the moment in Jelling will be permitted to develop and, in that connection, new initiatives may be necessary.

The management plan for the Jelling Monuments will be taken up for evaluation by the Parochial Church Council at least once a year in the October quarter. Revision of the management plan is undertaken by the Jelling Steering Group after a prior hearing by the Parochial Church Council and the Municipality of Vejle.



*Stained glass window in Jelling Church  
Executed by Jørn Larsen (year 2000)*

## **9. Monitoring**

### **9.1 Rules on inspection of church and churchyard:**

Provisions for supervision are established in the Act on Churches and Churchyards of the National Church of Denmark, Consolidated Act no. 77. of 2 February 2009.

The Parochial Church Council has the daily supervision of the church and churchyard. (§ 23.) A formalised inspection of the church and churchyard with the participation of representatives of the Parochial Church Council and a building expert designated by the Parochial Church Council shall take place very year prior to 1 October, and minutes from the inspection shall be kept. That is, any defects, damage, or other matters that are observed shall be described. A copy of the minutes shall be sent to the deanery committee, which decides what further action shall be taken. This decision



takes into consideration the economic situation in the tax assessment area and the character of the observations.

Furthermore, the same law (§ 26) states that an inspection shall be done at least every fourth year, usually led by the dean. A building expert designated by the deanery committee shall participate in the inspection. The dean shall make sure that a copy of the inspection minutes is submitted to the deanery committee, which will determine what further action shall be taken.

In the ministerial order on church buildings and churchyards of the National Church of Denmark, the inspection is explained in more detail. Thus, the following is established here (§ 36):

Sec. 1:

The inspection shall be made carefully and include:

- 1) The external condition of the church building.
- 2) The internal condition of the church building, including attic and steeple spaces.
- 3) Church inventory and equipment. Equipment that is kept outside the church must be present for inspection.
- 4) The need for measures to prevent break-ins, theft, fire, water damage, storm damage, and similar insurance events.
- 5) The churchyard with appurtenances and buildings for the use of the church and churchyard.
- 6) Accessibility of church buildings and churchyard to people with handicaps.
- 7) Environmental and energy concerns.

Sec. 2.

The inspection is to insure that defects ascertained in earlier inspections are remedied. If this has not occurred, the reason therefor must be provided, and a new deadline for the remedy fixed.

Sec. 3.

With the survey report, a determination is to be made about what new work and precautions are to be carried out to bring the church into a sound condition. A deadline is to be fixed for the remedy of defects.

These provisions are applicable for both the Parochial Church Council's own inspection and the deanery inspection.

In its treatment of the inspection report, the deanery committee shall decide whether the defects are to be improved with financing from the operations funding or whether it is to be reported as a matter for grounds funding. In most instances, grants will only be able to be made in the following fiscal year.

## **9.2 Annual financial planning for the church and monument area.**

Every year, funds for operations and maintenance shall be secured through annual budget procedures:

**January quarter**

Accounts for the previous year are examined and approved by the Parochial Church Council

Evaluation of planned investments and maintenance work

Accounts submitted to dean of Vejle  
Accounts submitted to auditor

The Parochial Church Council undertakes budget follow-up

**April quarter**

Parochial Church Council undertakes inspection of:  
The monument area  
The church  
The churchyard

Every fourth year, inspection is undertaken by the deanery of Vejle

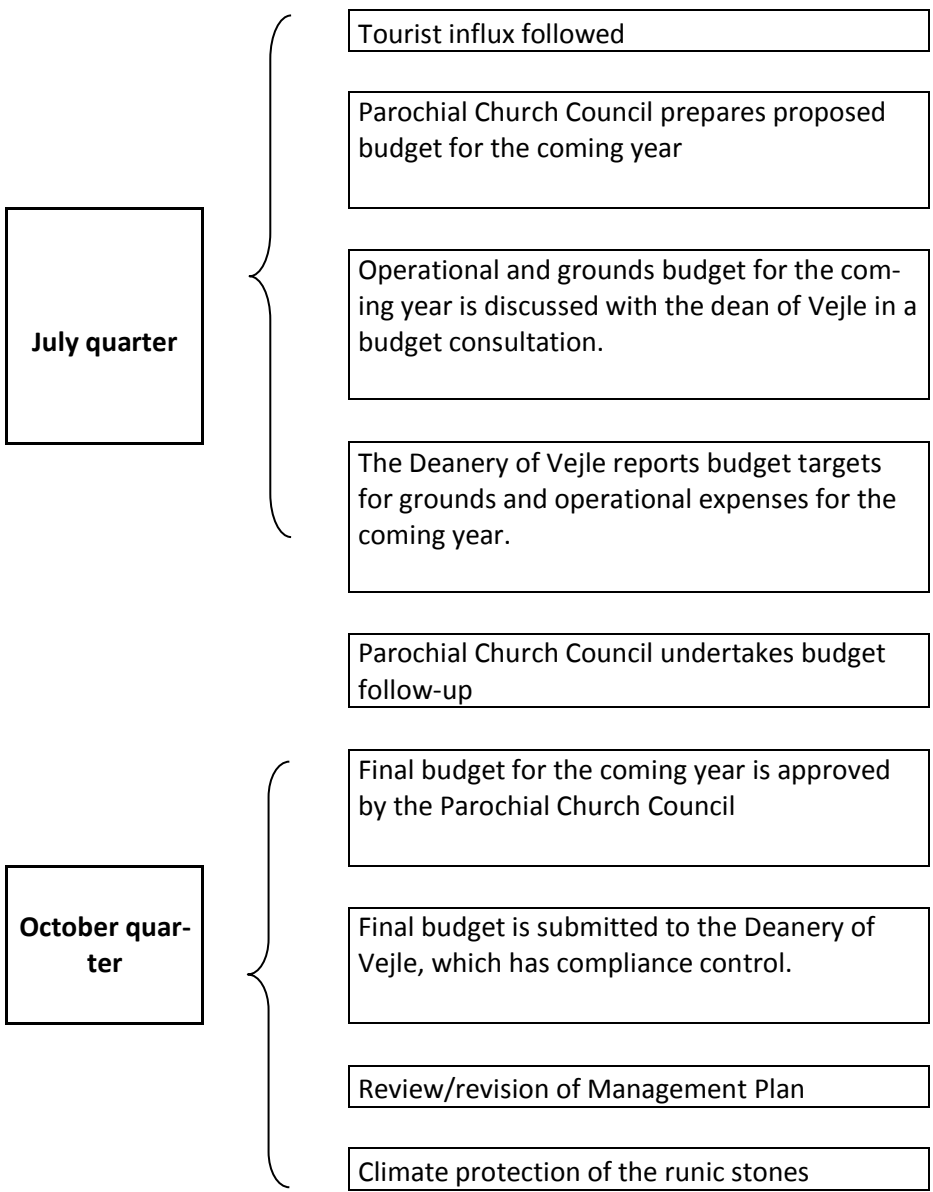
Work identified by the inspection is priced

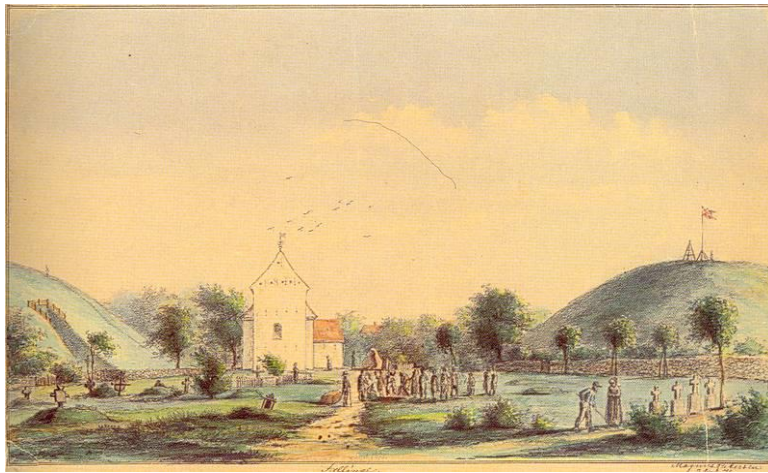
Accounts from the previous year discussed by the Deanery of Vejle and plan for the next year's budget discussed

Financial estimate of major grounds work is submitted to the Deanery of Vejle

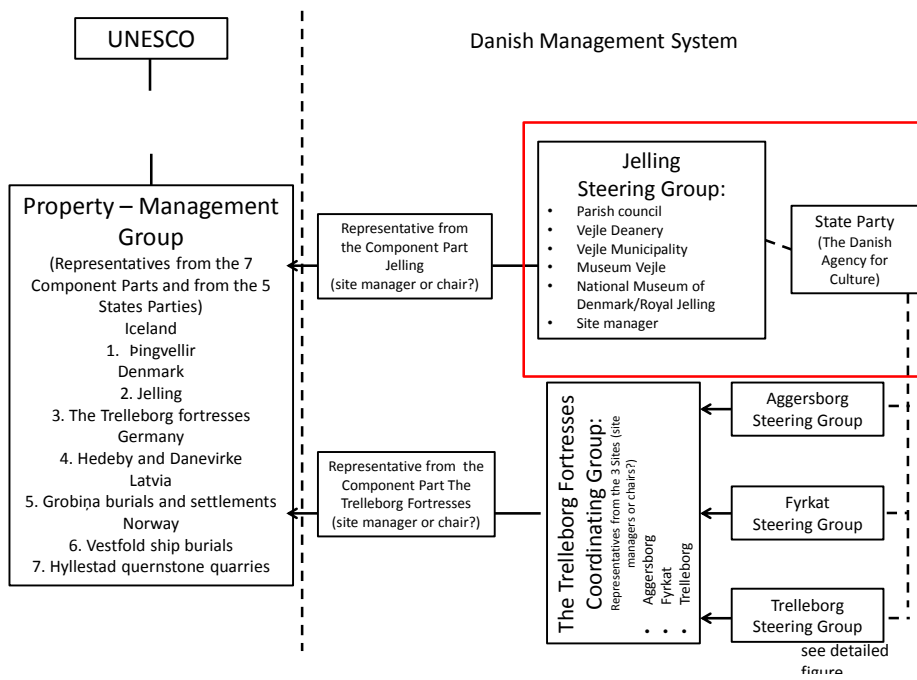
Parochial Church Council undertakes budget follow-up







Jelling seen from the west, painted by Magnus Petersen in 1871



### **The Cooperation/Steering Group:**

- Jelling Parish Council, Gunni Højvang – Inger Kragh-Schwarz
- Vejle Deanery, Leif Arffmann
- Vejle Municipality, Henrik Børsting Aagaard – Camilla Jørgensen
- Vejle Museum, Ove Sørensen – Charlotta Lindblom
- National Museum of Denmark/Royal Jelling, Ulrik Abild  
Hans Ole Mathiesen
- Site manager – Inger Kragh-Schwarz
  
- **STATE PARTY – The Danish Agency for Culture**

## 10. Appendices

### Appendix A: UNESCO's criteria for World Heritage Sites

- (i) to represent a masterpiece of human creative genius;
- (ii) to exhibit an important interchange of human values, over a span of time or within a cultural area of the world, on developments in architecture or technology, monumental arts, town-planning or landscape design;
- (iii) to bear a unique or at least exceptional testimony to a cultural tradition or to a civilization which is living or which has disappeared;
- (iv) to be an outstanding example of a type of building, architectural or technological ensemble or landscape which illustrates (a) significant stage(s) in human history;
- (v) to be an outstanding example of a traditional human settlement, land-use, or sea-use which is representative of a culture (or cultures), or human interaction with the environment especially when it has become vulnerable under the impact of irreversible change;
- (vi) to be directly or tangibly associated with events or living traditions, with ideas, or with beliefs, with artistic and literary works of outstanding universal significance. (The Committee considers that this criterion should preferably be used in conjunction with other criteria);
- (vii) to contain superlative natural phenomena or areas of exceptional natural beauty and aesthetic importance;
- (viii) to be outstanding examples representing major stages of earth's history, including the record of life, significant on-going geological processes in the development of landforms, or significant geomorphic or physiographic features;
- (ix) to be outstanding examples representing significant on-going ecological and biological processes in the evolution and development of terrestrial, fresh water, coastal and marine ecosystems and communities of plants and animals;
- (x) to contain the most important and significant natural habitats for in-situ conservation of biological diversity, including those containing threatened species of outstanding universal value from the point of view of science or conservation.

## **Appendix B:** Checklist prepared for use in the dean's inspection

### **The church building**

Building as a whole.

Masonry (cracks, grouting, spackling, moisture, drainage).

Gutters and barge boards (attack of moisture or rot. Is painting needed?).

Chimney (cleanout door).

Attics (are they clean – is old inventory stored in a responsible way?).

Belfry lights. (wire gauze or condition of trapdoor).

Weathertightness of roof and other conditions.

Doors (locking mechanisms-hinges-paint)

Floors (dry rot-moisture).

Ventilators (are there enough – do they work?).

### **Inventory**

Bells (bell stock, mount, cracks, clapper, clapper eye bolt, passageway, tone).

Steeple clock.

Lightning rod (tested?).

Electrical installations (shift?).

Central heating.

Organ (woodworms – bellows).

Hearing aids.

Sacred vessels (cleaning and storage?).

Books on the altar (number – condition).

Altar vessels (storage – the red chasuble).

Baptismal font

Is there a sign of dessication damage?

### **Mortuary, tool shed, toilet**

Building as a whole.

Painting.

Drainage.

Ventilation.

Cleanliness.

### **Churchyard**

Map and rules of conduct (confer – check in relation to conditions in the churchyard).

Maintained grave sites.

Monuments.

Passageways.

Churchyard fence (stone slippage? exposure ? gates?).

Vegetation – including trees.

Drainage and sewage.

### **Other**

Care of churchyard and respect for preservation provisions?.